

Coastal HYCOM modeling in South Florida: evaluation of GODAE boundary conditions, resolution and forcing

Villy Kourafalou, Ge Peng and Heesook Kang
University of Miami / RSMAS

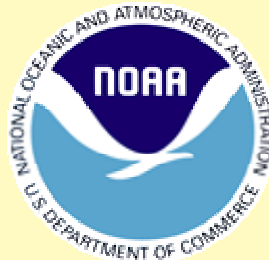
In Collaboration with

G. Halliwell, N. Shay, T. Lee and C. Paris (UM/RSMAS)

P. Hogan, OM. Smedstad, A. Walcraft and J. Cummings (NRL-SSC)

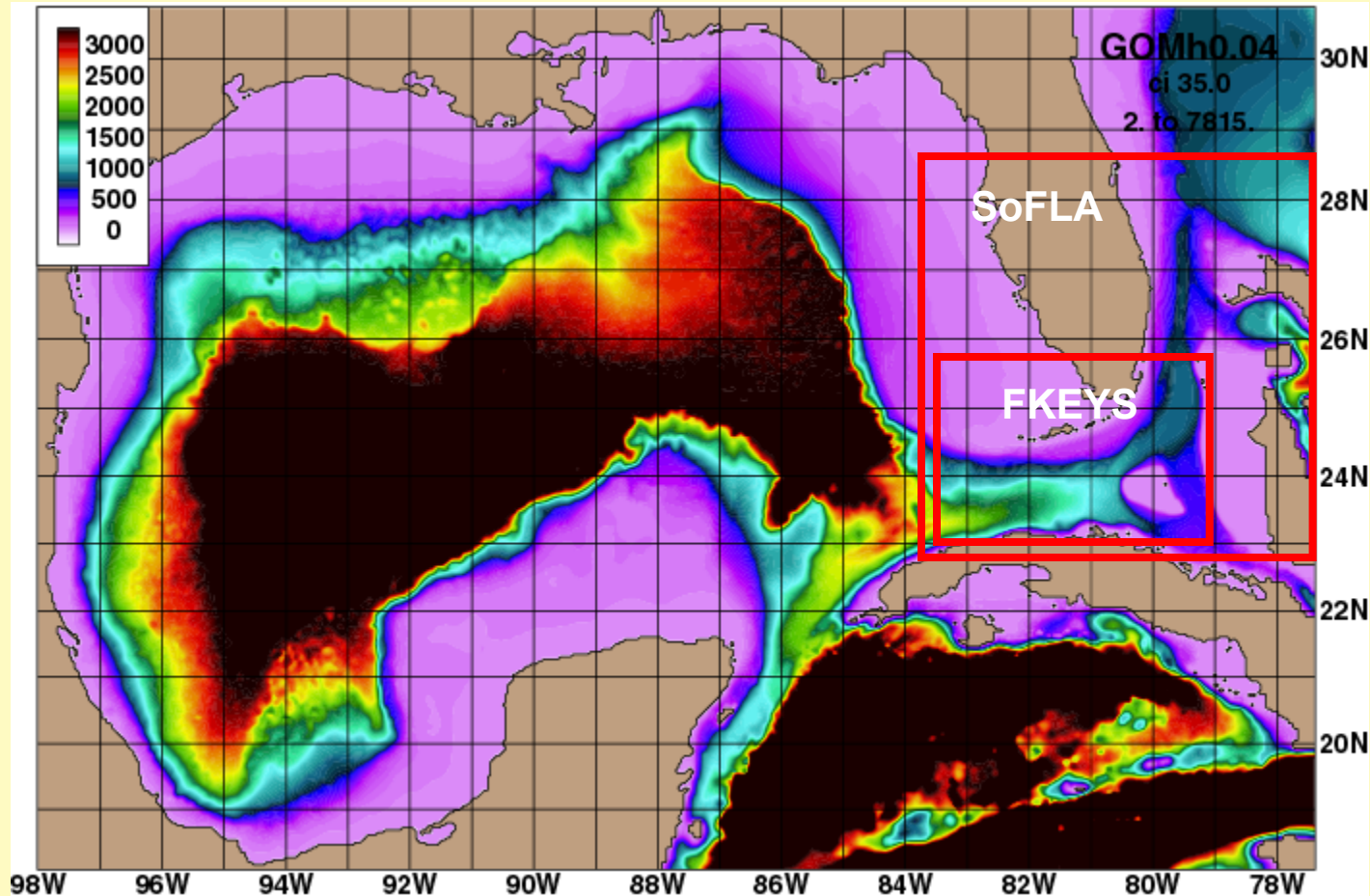
R. Weisberg (USF)

M. Baringer and C. Meinen (NOAA-AOML)



SOUTH FLORIDA HYCOM NESTED MODELS

Nested in GoM-HYCOM / ATL-OI (one-way) / No tides



SoFLA-HYCOM

1/25° resolution

(~3-4 km)

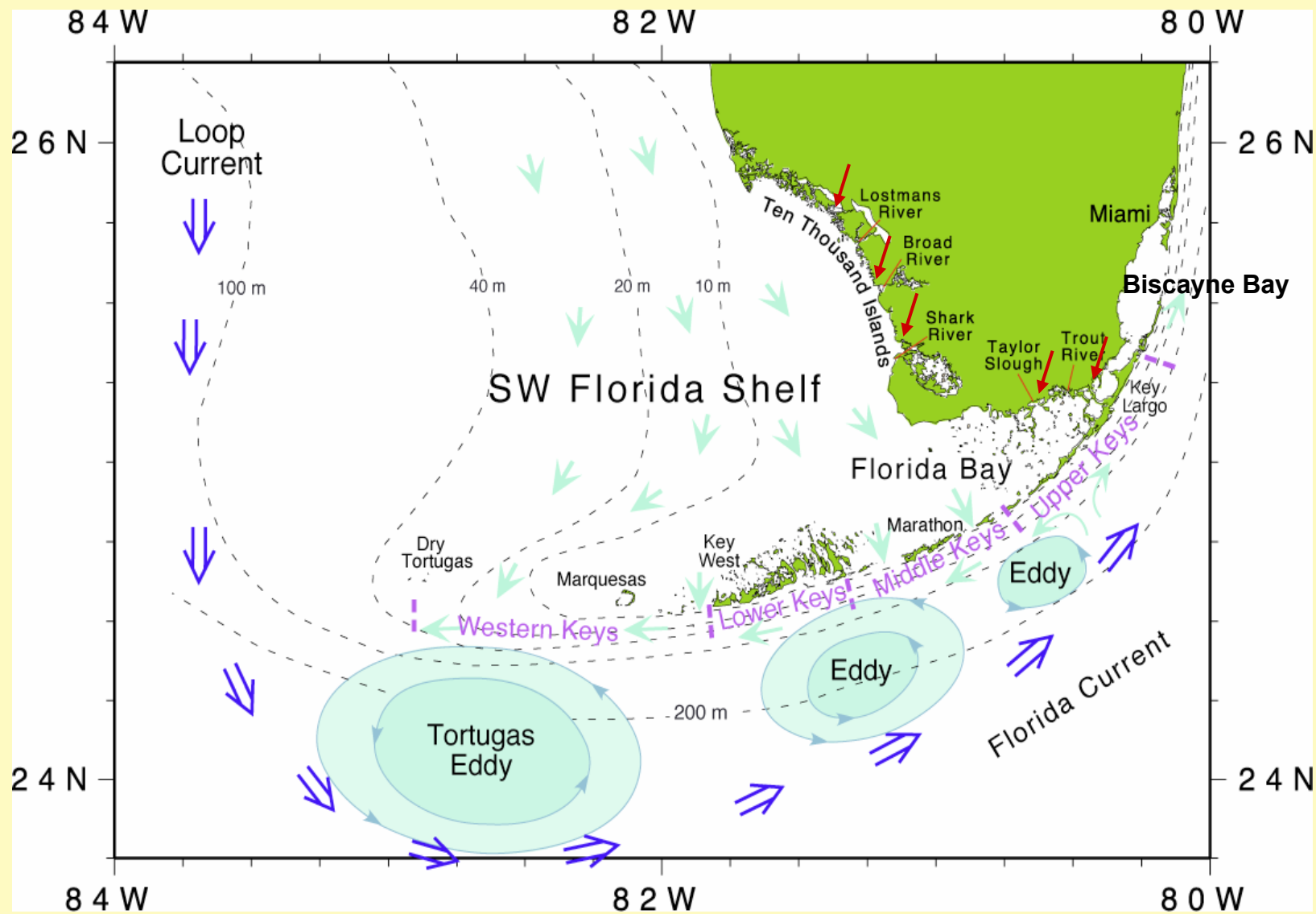
FKEYS-HYCOM

1/100° resolution

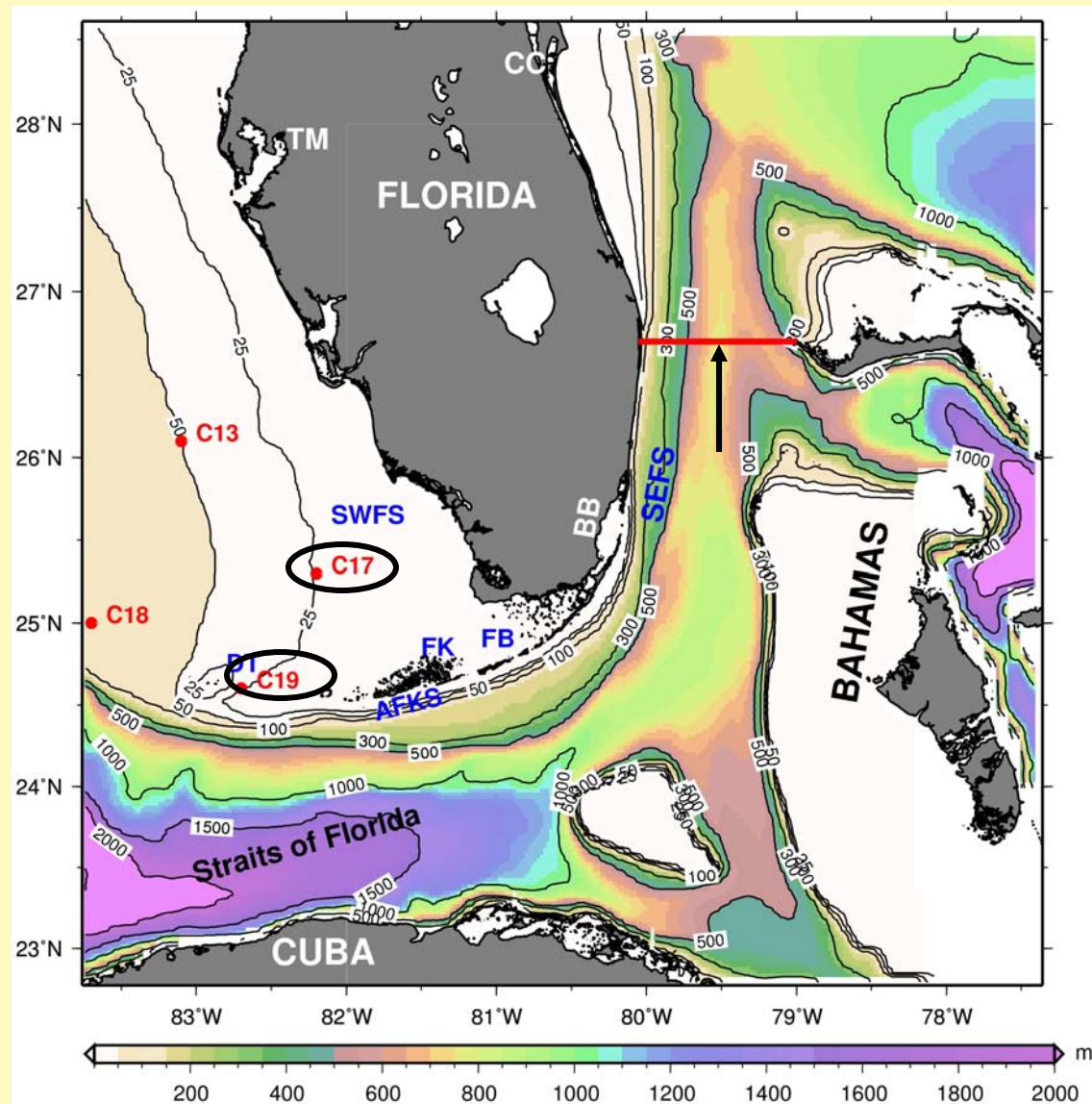
(~ 900 m)

Gulf of Mexico topo / minimum water depth: 2m

The complex South Florida coastal system



Regional South Florida Model (SoFLA- HYCOM)

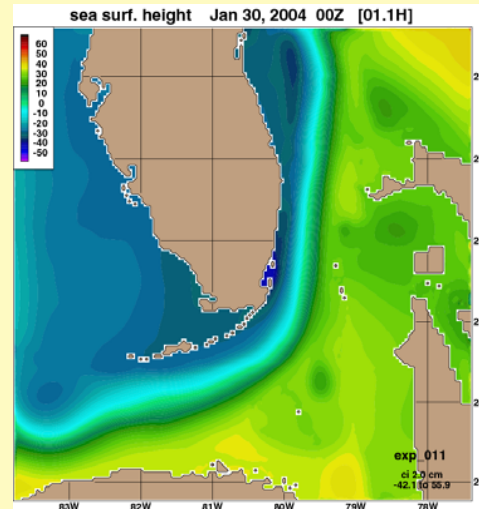
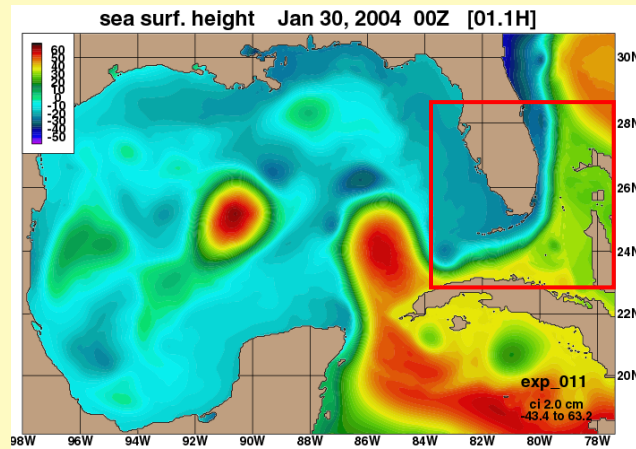


SoFLA-HYCOM Experiments on Boundary Condition effects

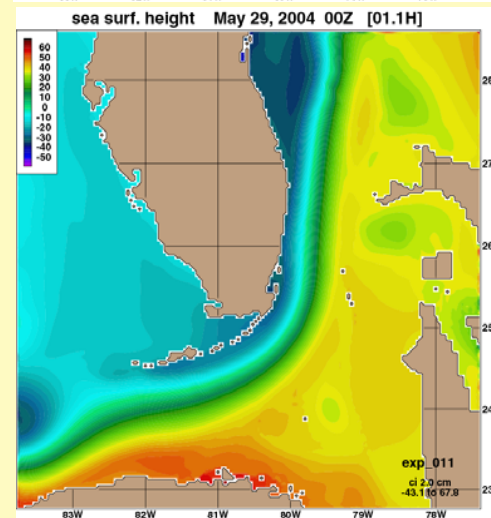
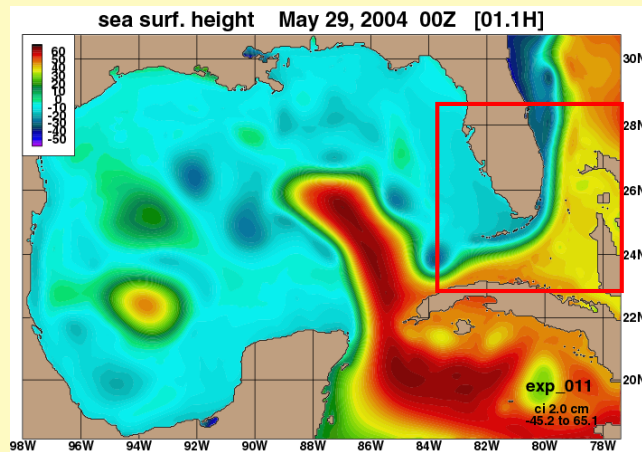
Experiment	Layers	Nesting BC	Forcing	Integration Time
SoFLA(exp1)	26	GOM-Free	coamps 27km	2004-2005
SoFLA(exp2)	26	GoM-NCODA	coamps 27km	2004-2005
SoFLA(exp3)	26	ATL-OI	coamps 27km	2004-2005

*Kourafalou et al., 2008
(submitted to Ocean Dynamics)*

SEA SURFACE HEIGHT



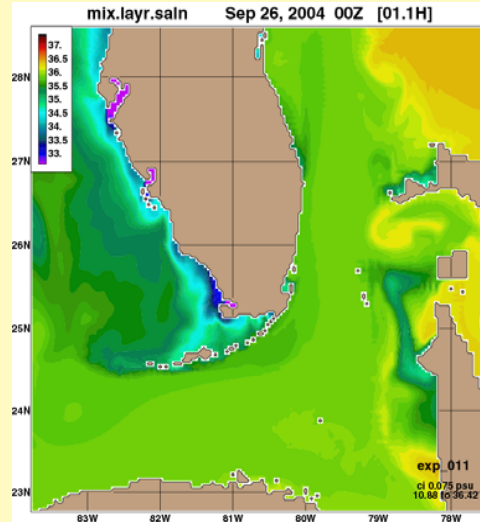
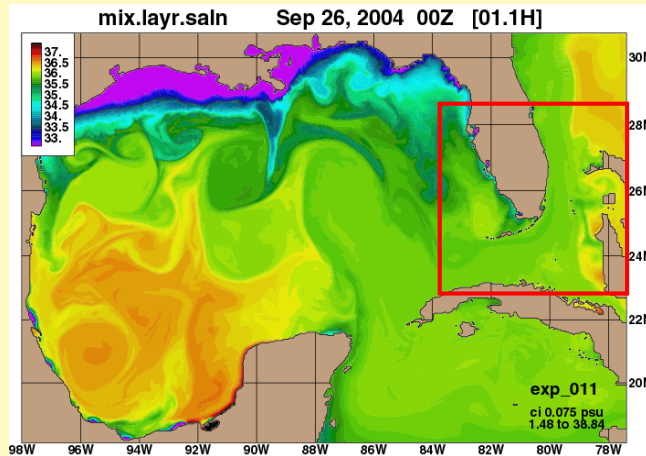
Jan 04



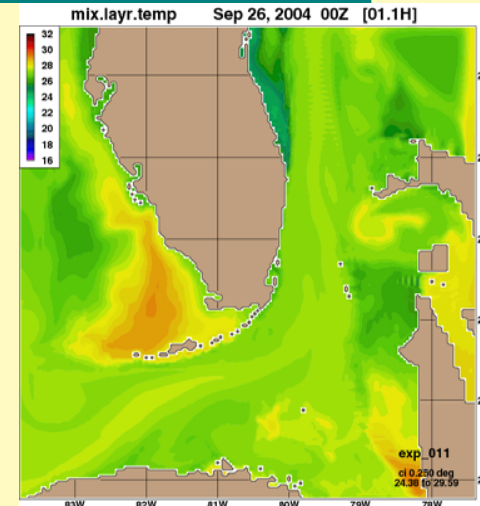
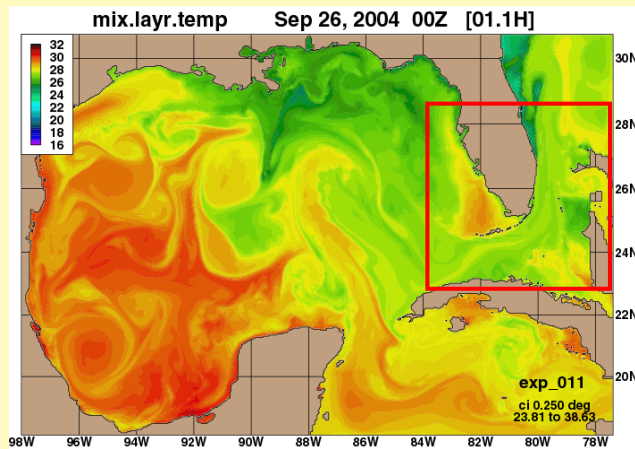
May 04



Near surface SALINITY



Near surface TEMPERATURE



Sept. 2004

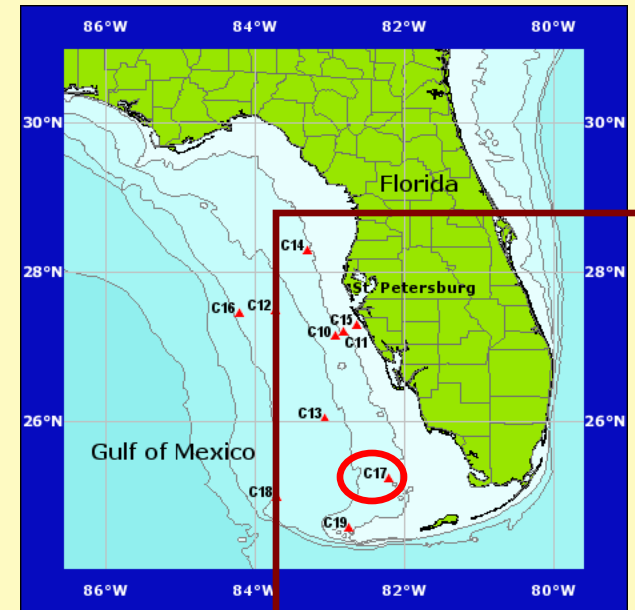
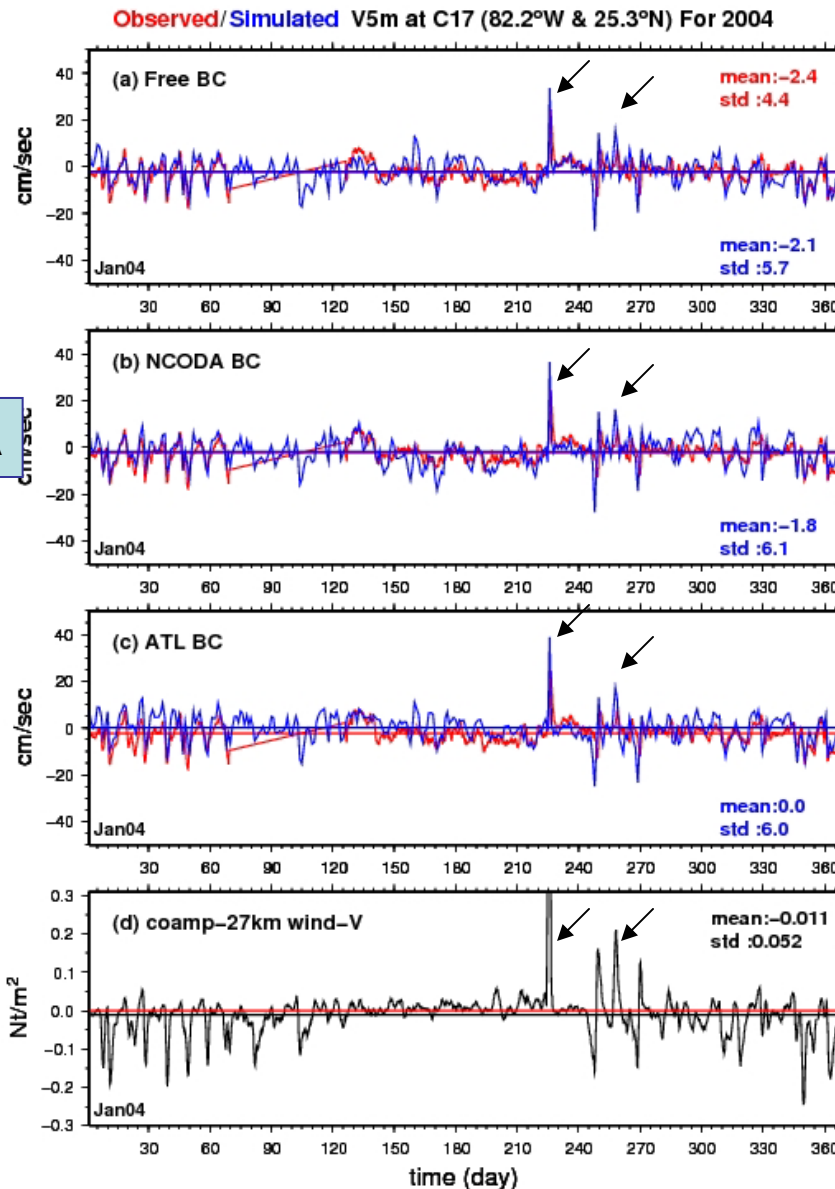
Model-Data Comparison: along-shore velocity #C17

2004

FREE

NCODA

ATL



SoFLA-HYCOM

Wind (COAMPS 27 km)

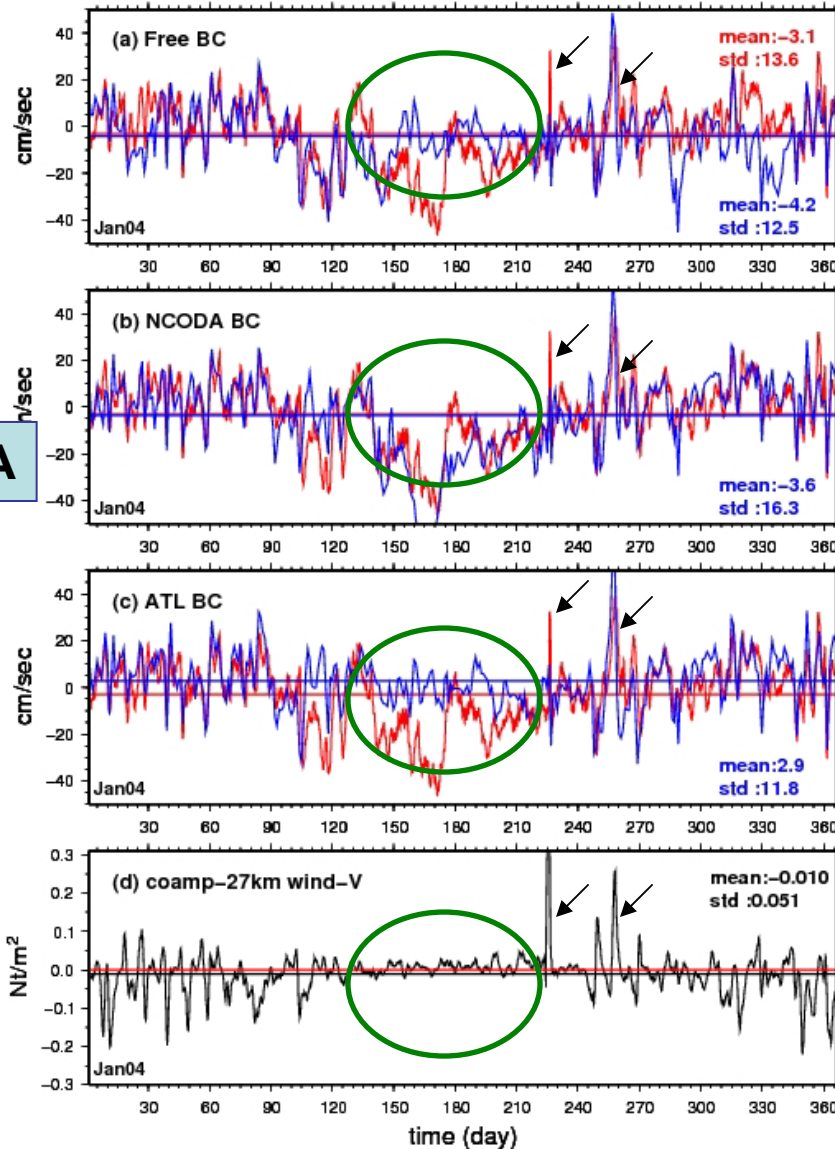
3-hourly winds & hourly mooring data
=> Daily filtering

Data by Bob Weisberg, USF

Model-Data Comparison: along-shore velocity #C19

2004

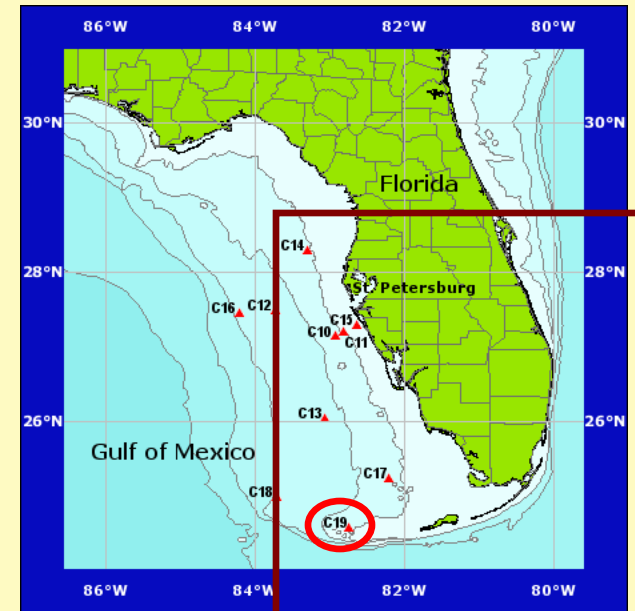
Observed/Simulated V5m at C19 (82.7°W & 24.6°N) For 2004



FREE

NCODA

ATL



SoFLA-HYCOM

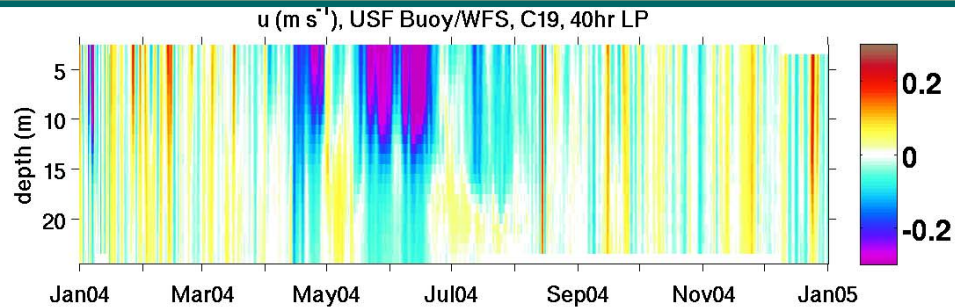
Wind (COAMPS 27 km)

3-hourly winds & hourly mooring data
=> Daily filtering

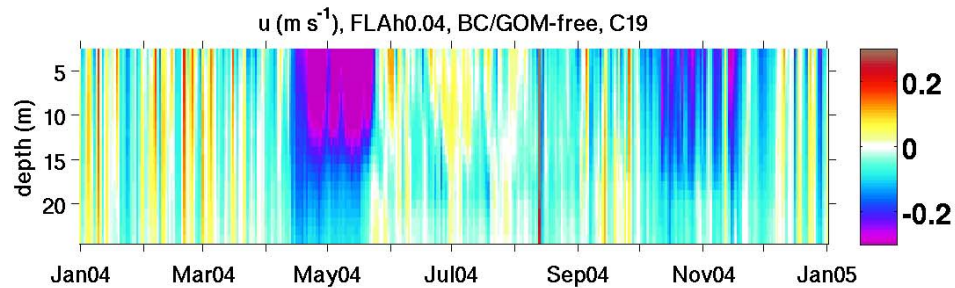
Data by Bob Weisberg, USF

Model-Data Comparison: cross-shore velocity #C19

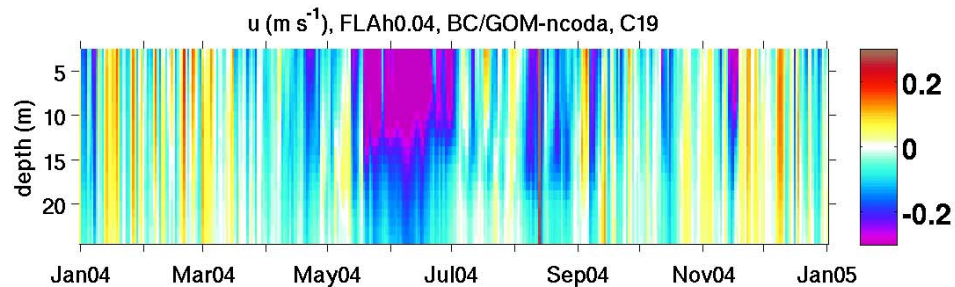
DATA



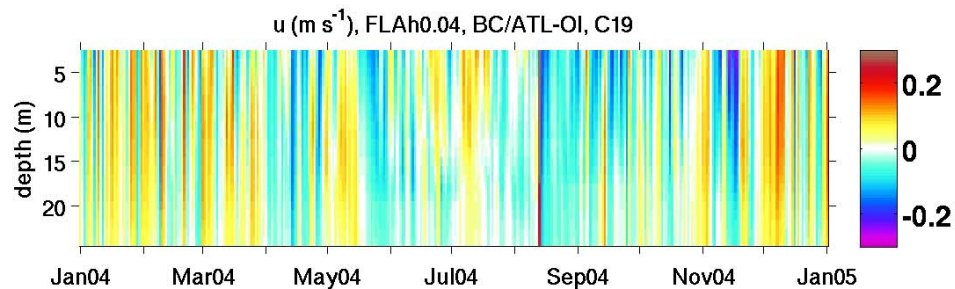
FREE



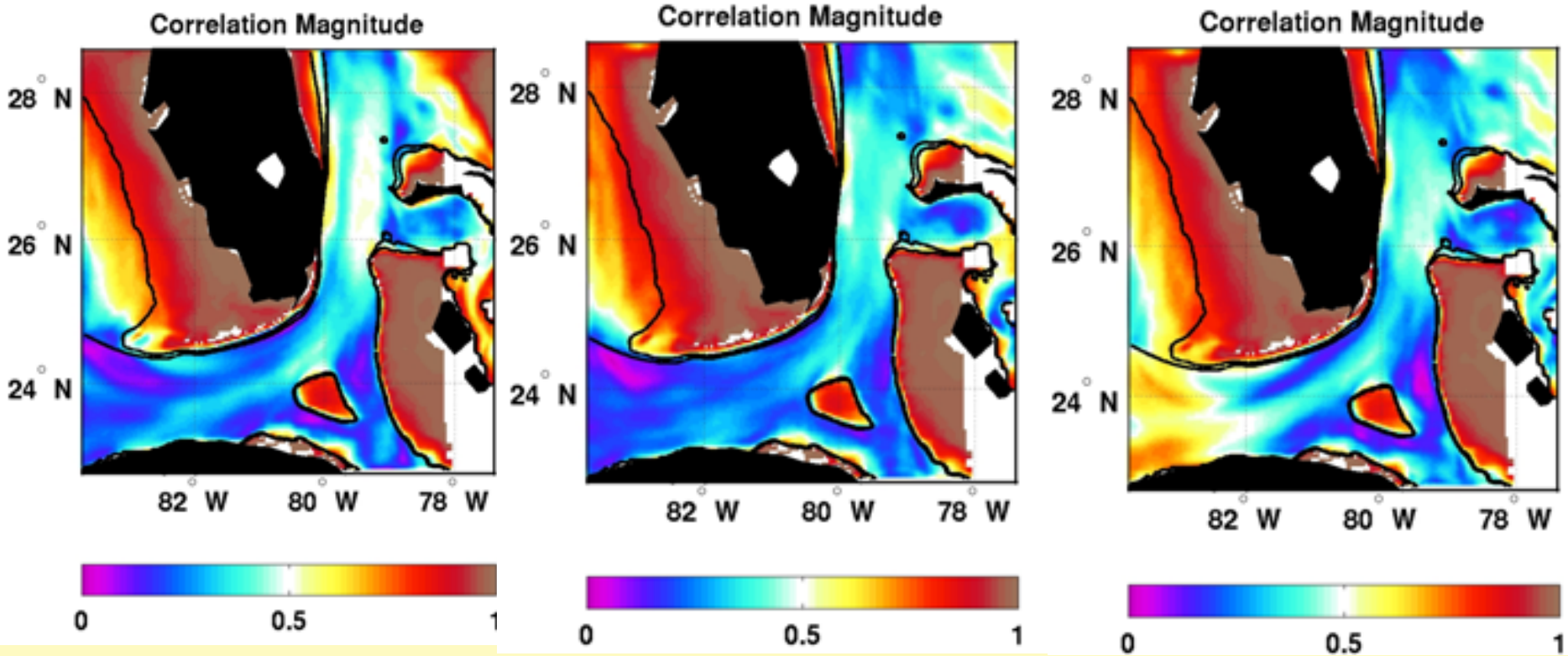
NCODA



ATL



Velocity vector correlations



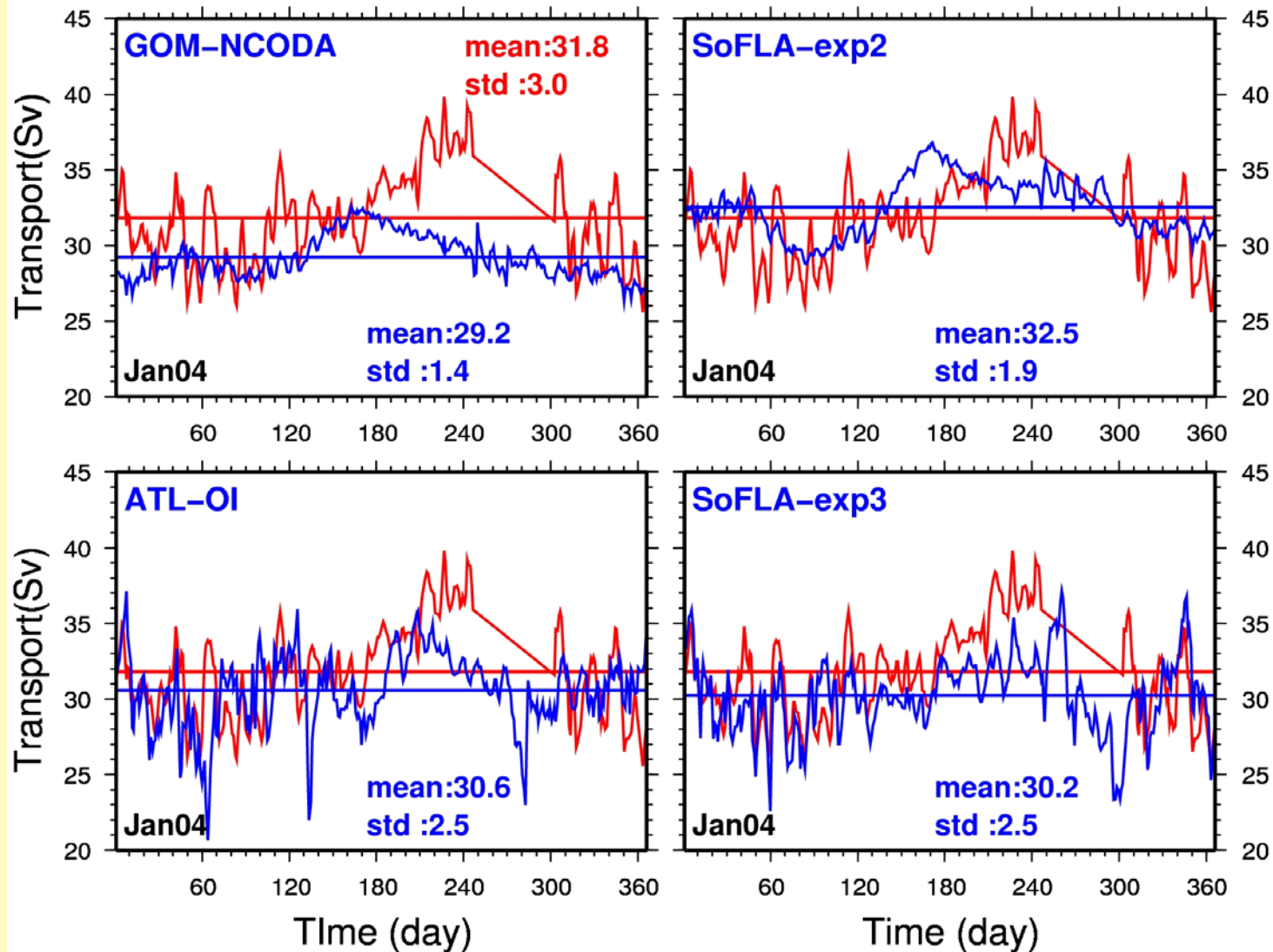
exp1 / exp2

exp1 / exp3

exp2 / exp3

Florida Current Transport

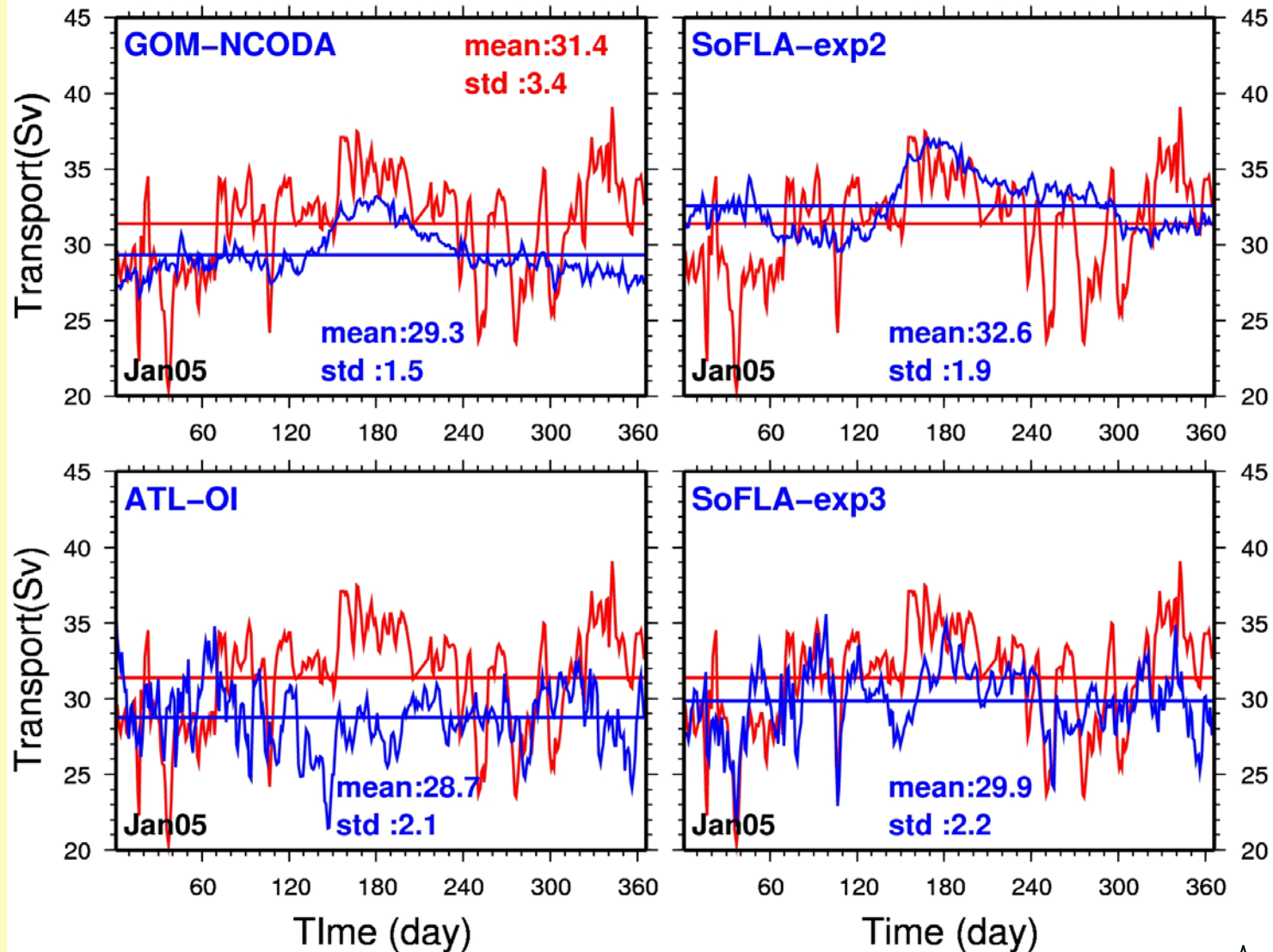
Observed/Simulated FC Transport (Year 2004)



2004

Florida Current Transport

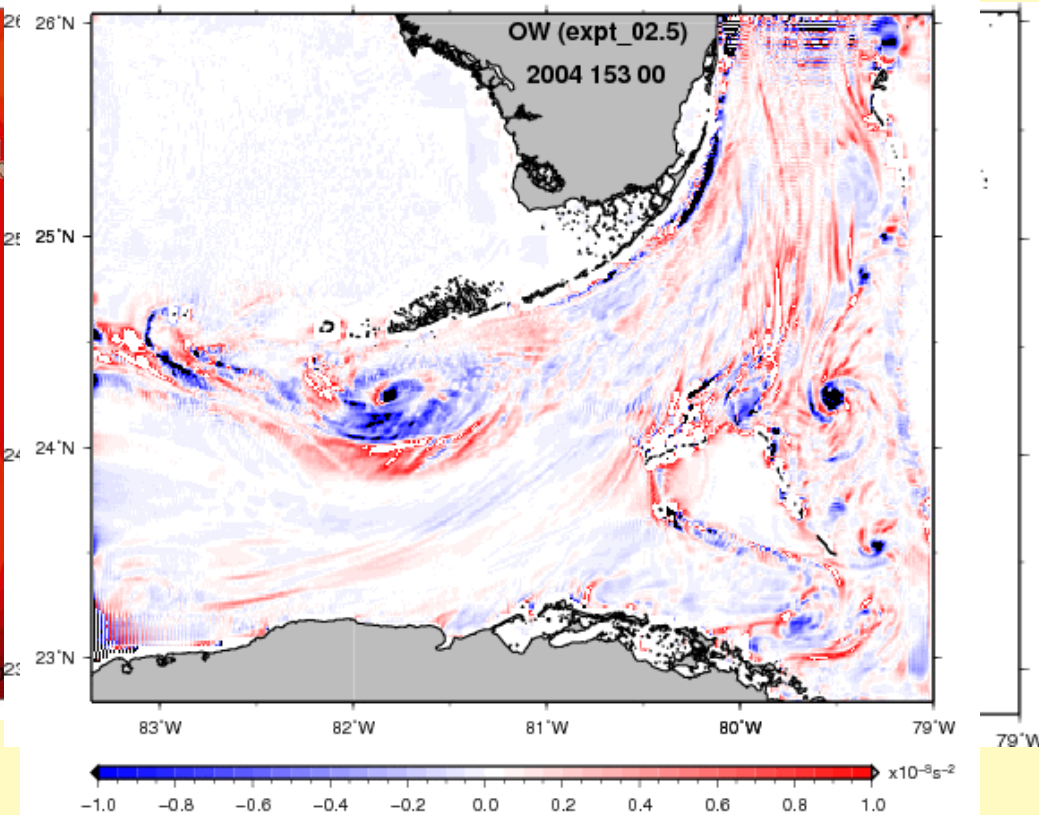
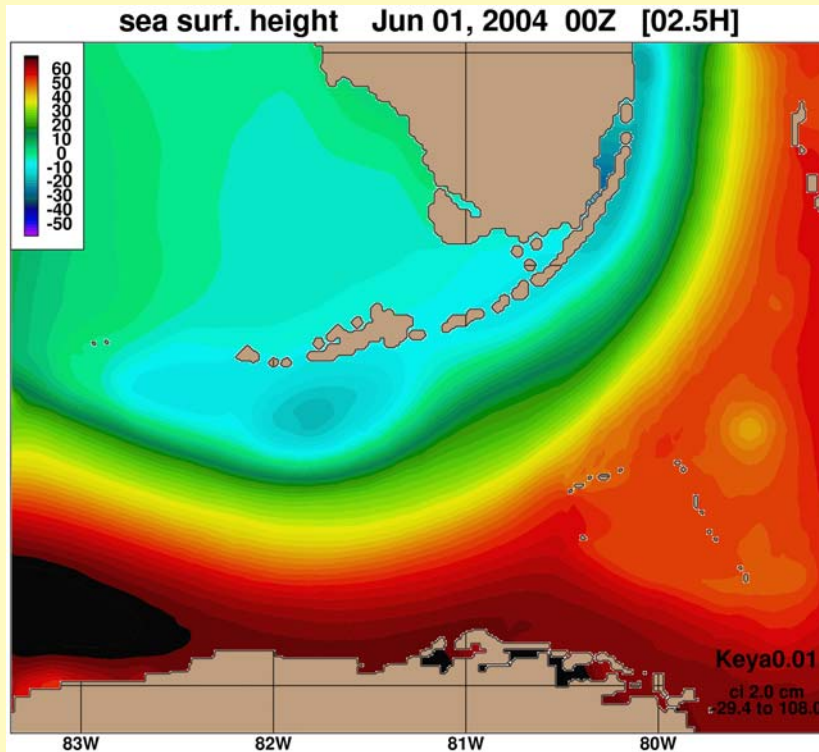
Observed/Simulated FC Transport (Year 2005)



2005



Hovmuller diagrams of SSH along isobaths



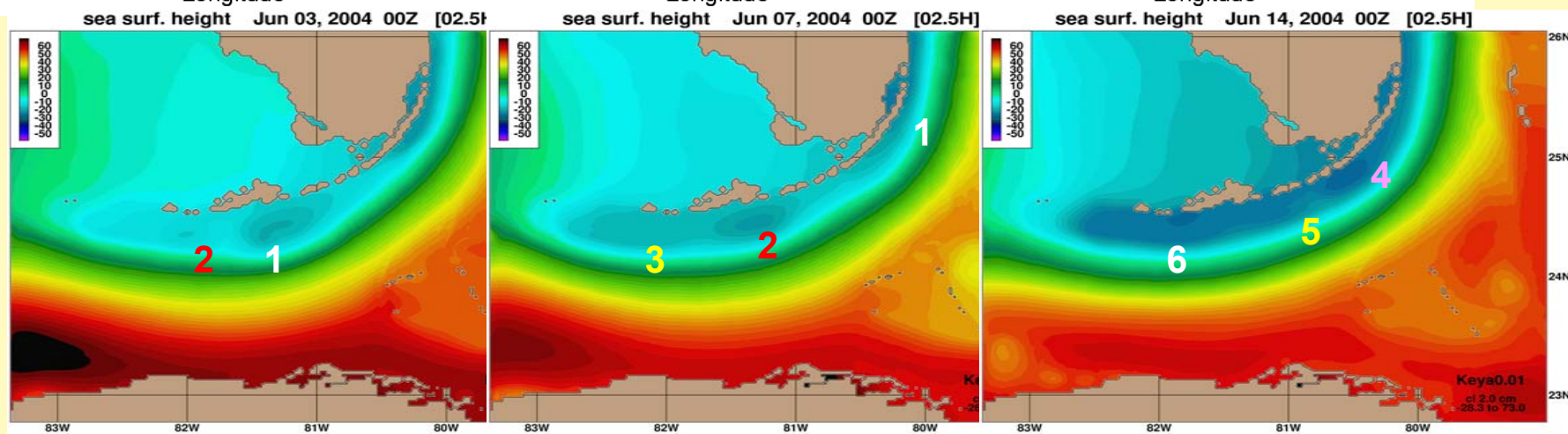
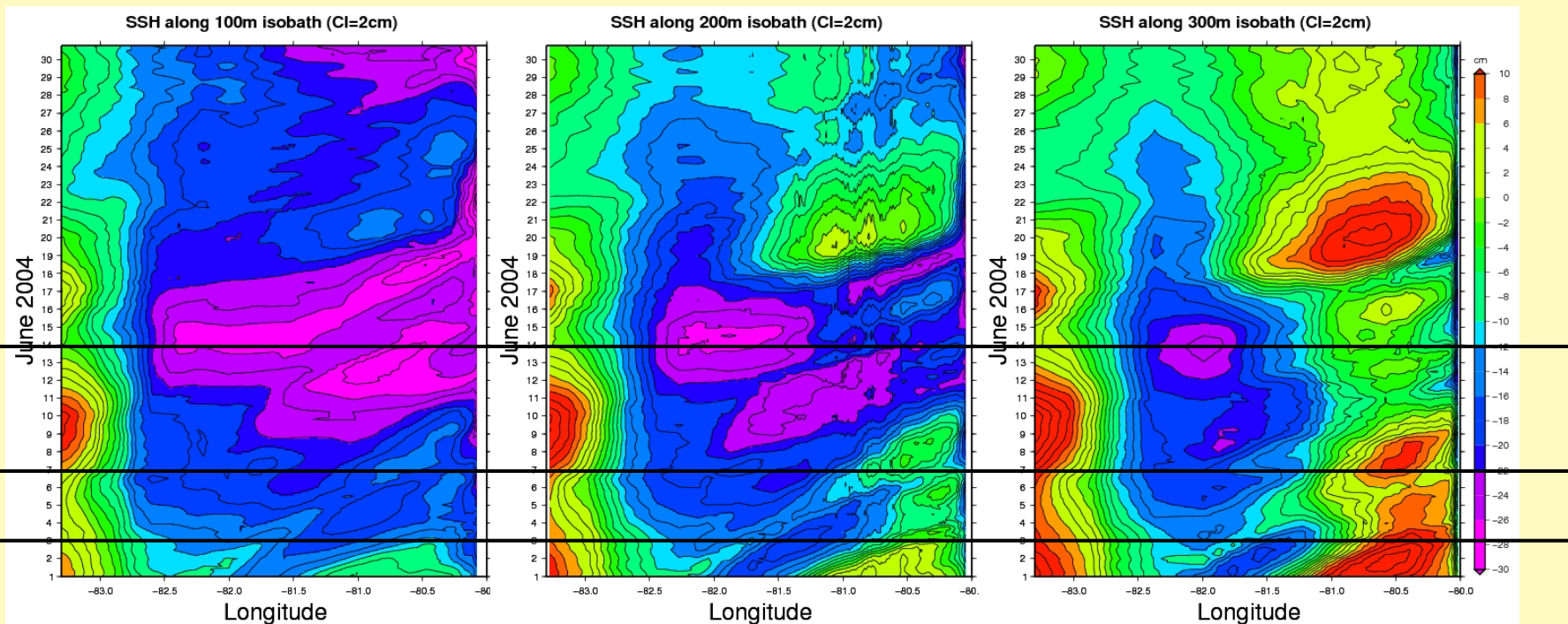
Okubo-Weiss parameter

$$Q = d^2 - \zeta^2$$

100 m

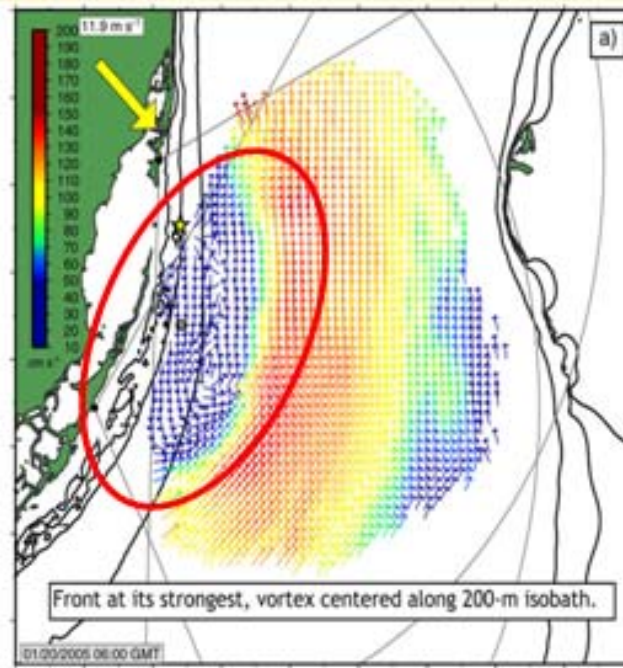
200 m

300 m

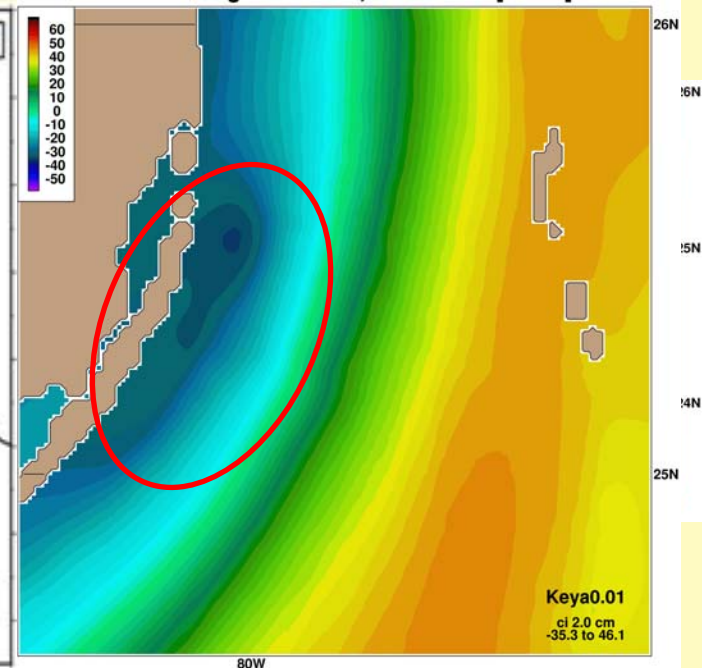


Model to data validation: eddy passages

WERA data



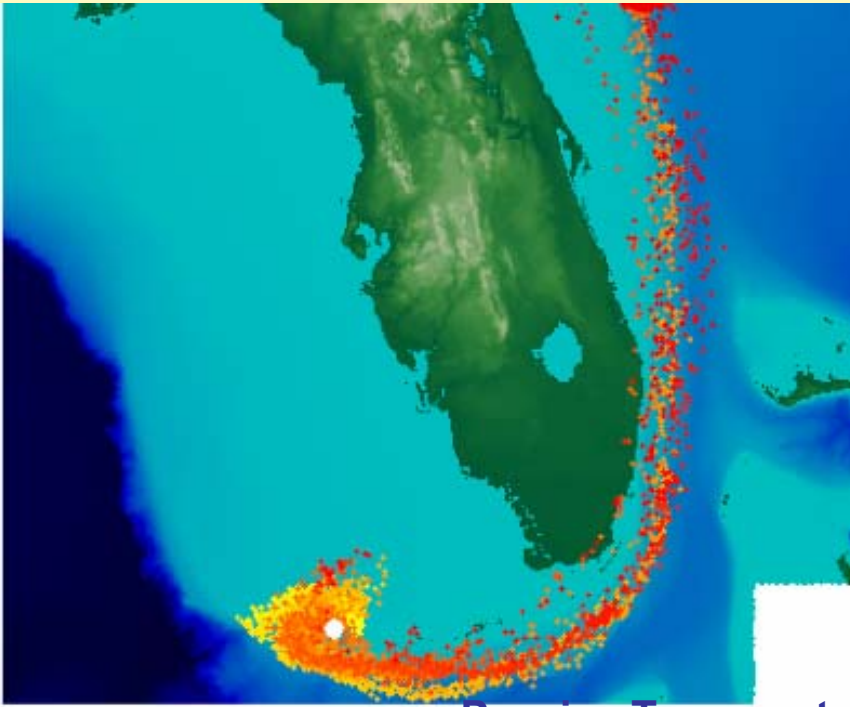
FKEYS-HYCOM



Data by Nick Shay, UM/RSMAS



Application: HYCOM-BiOphysical Lagrangian Tracking System (BOLTS)



Passive Transport

Dry Tortugas - Release April 1, 2004
Daily position of particles during a 30-day
passive transport in the Florida Current

Recruitment to coral reef = 2%

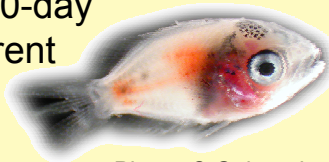
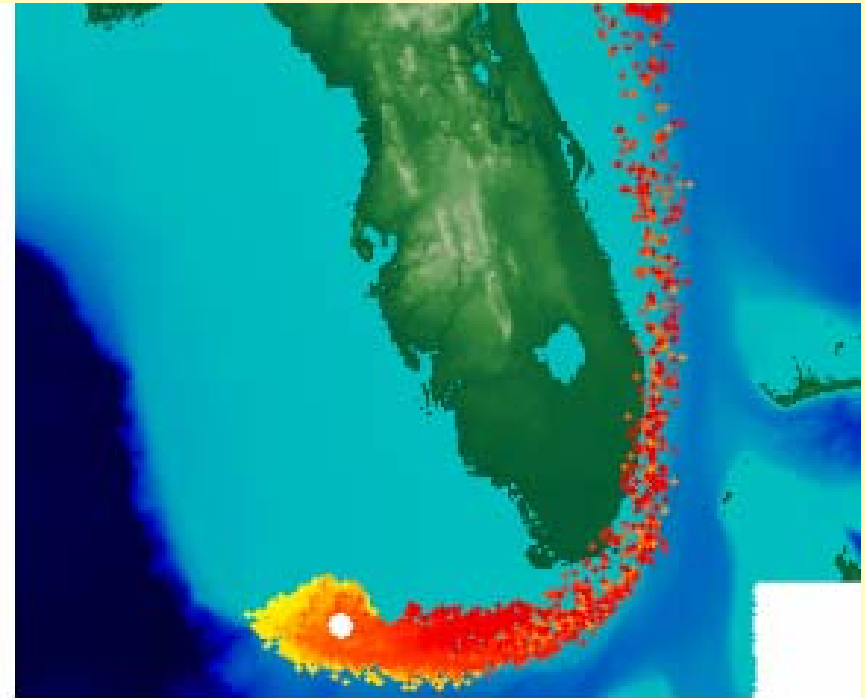


Photo: C Guigand



Active Transport

Dry Tortugas - Release April 1, 2004
30-day active transport with OVM observed
from the bicolor damselfish larvae

Recruitment to coral reef = 38%

In collaboration with A. Srinivasan

Application: Comprehensive Everglades Restoration Project (CERP)

