

Tropical instability waves in HYCOM

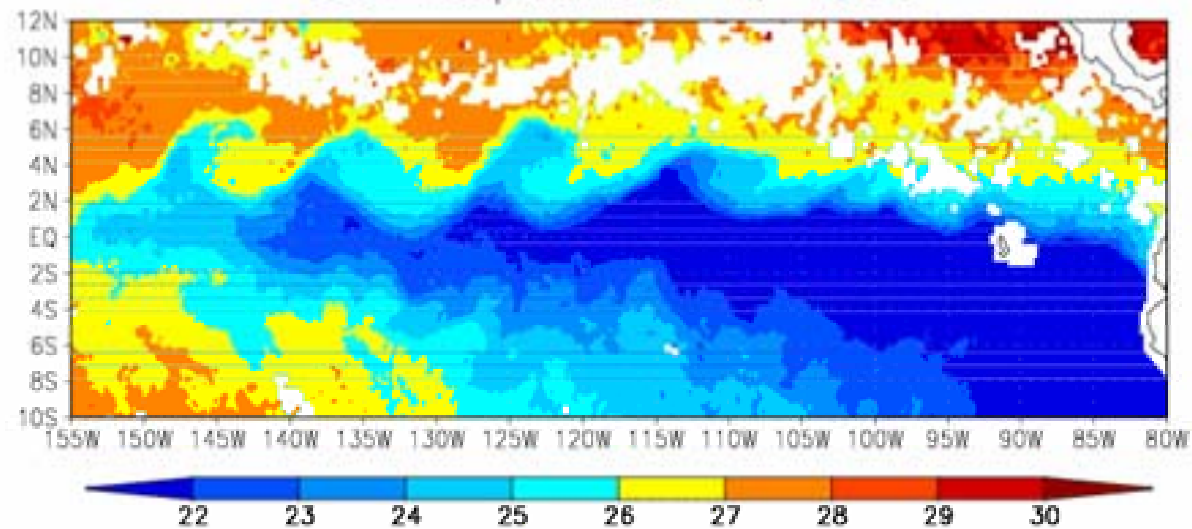
by

Toshi Shinoda

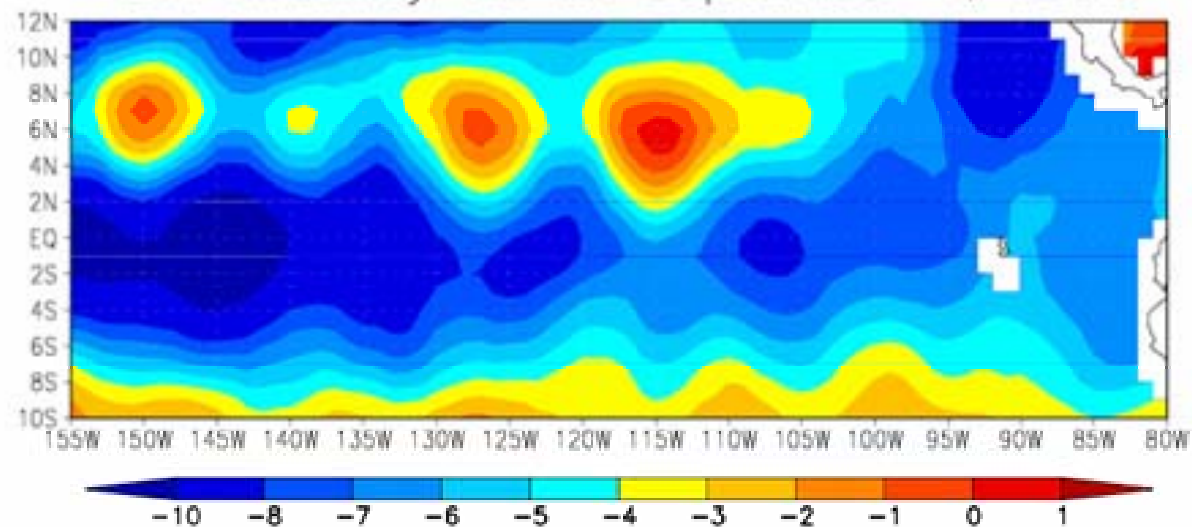
(NRL Stennis Space Center)

1. Introduction
2. Statistical description of TIWs
3. Evaluation of HYCOM simulation
4. Conclusions

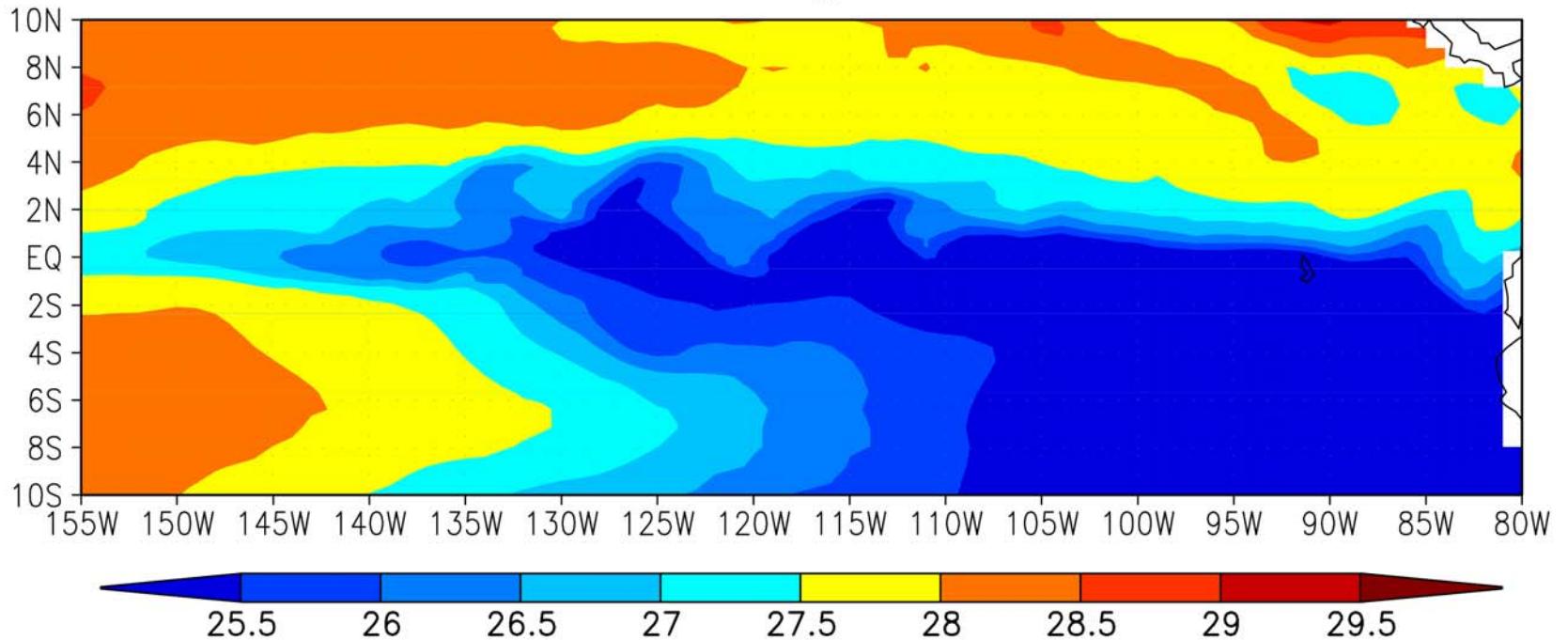
SST September 1, 1999



SSH Anomaly TOPEX September 1, 1999



HYCOM SST August 31, 1989

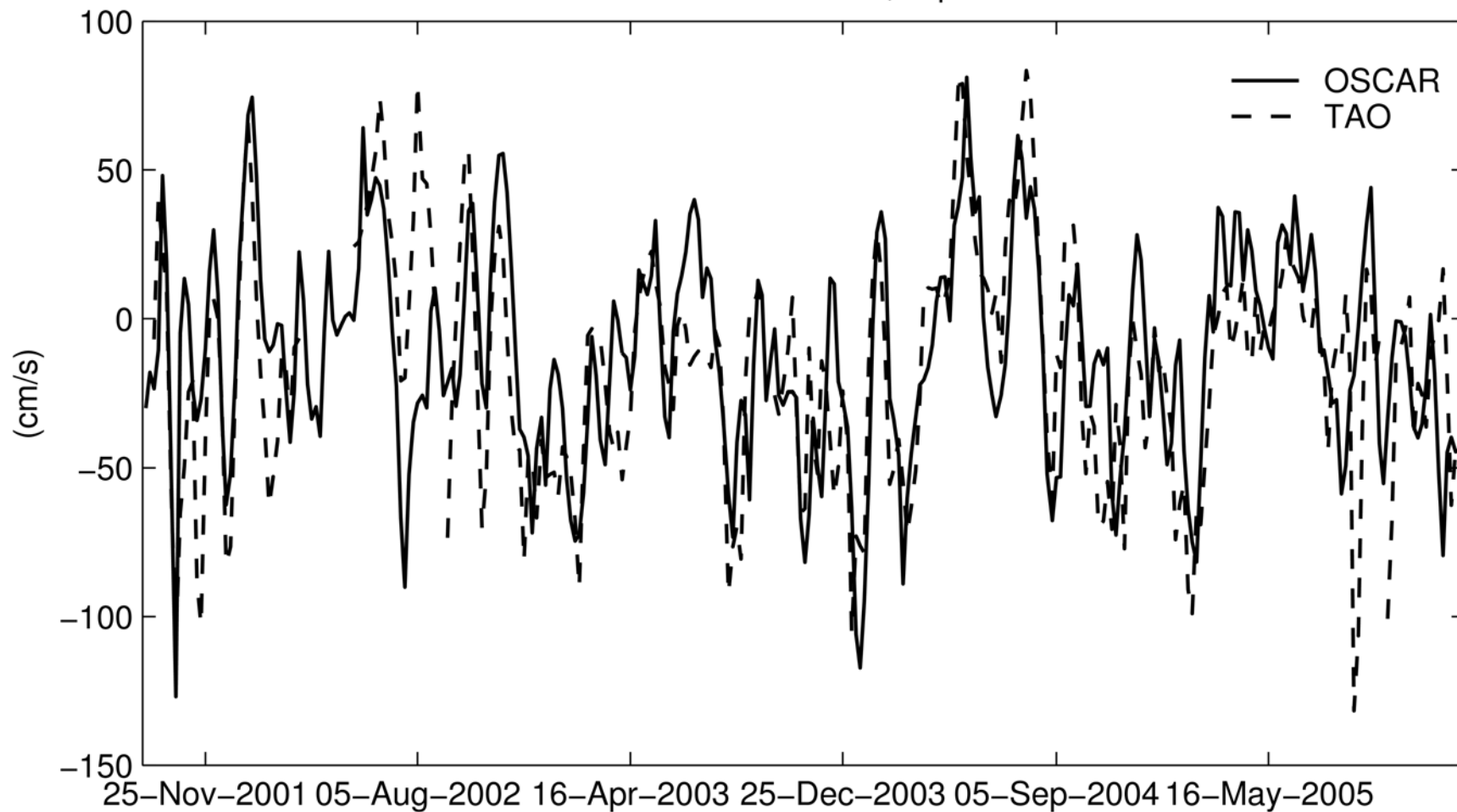


Provide the statistical description of TIW using available satellite data.

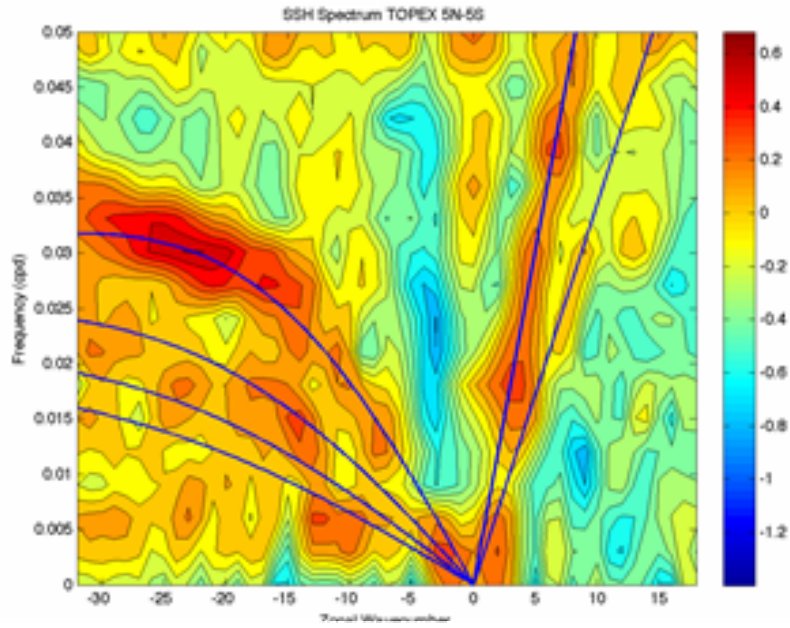
Data

Sea Surface Height	==> TOPEX (1993-2002)
SST	==> TMI (1998-2006) Reynolds (1981-2006)
Surface velocity	==> OSCAR (1992-2006)

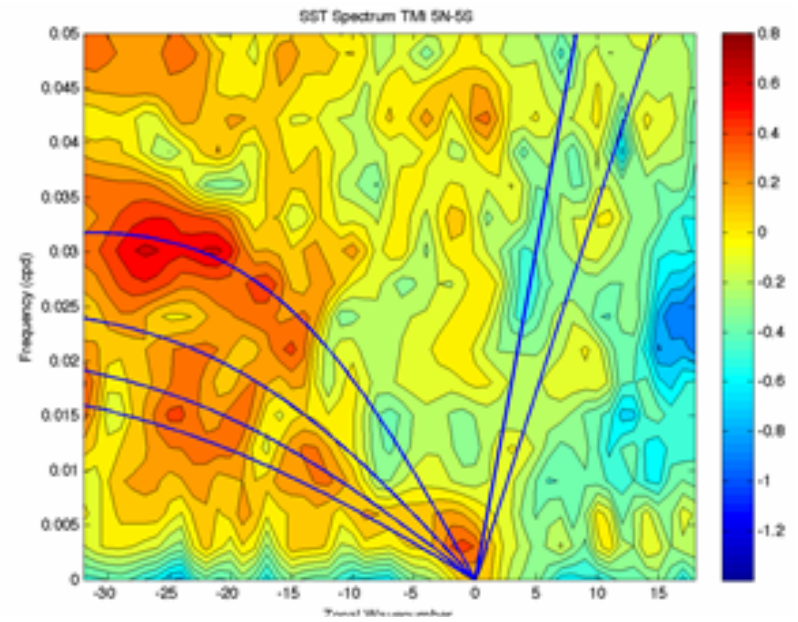
Zonal Current 140W, Equator



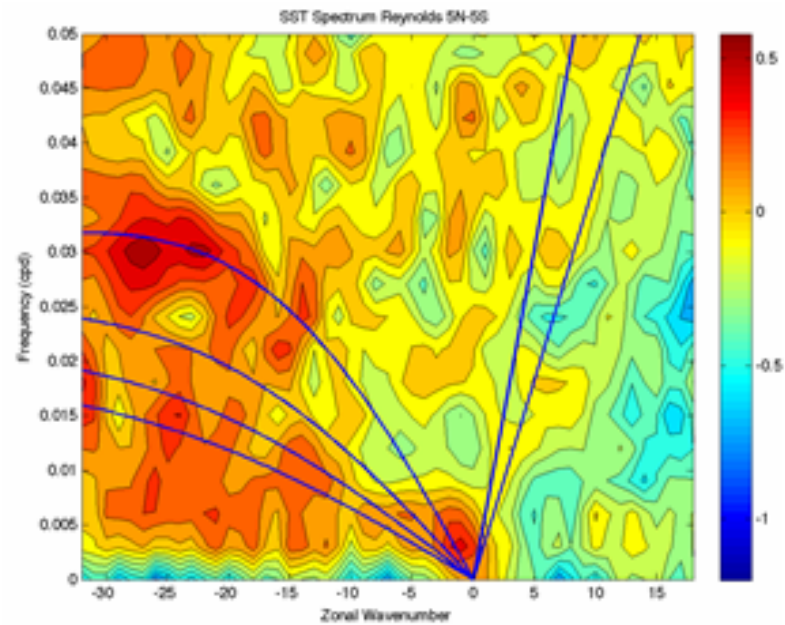
TOPEX



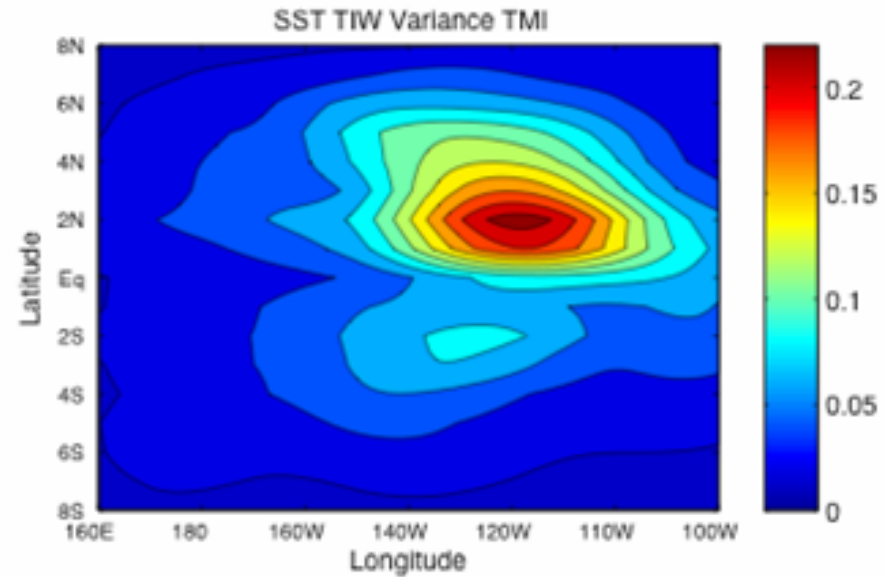
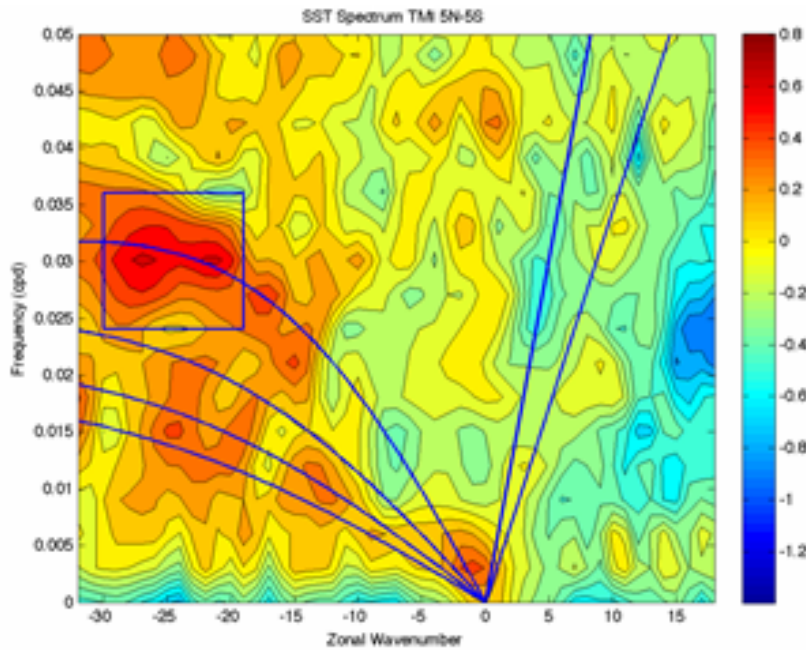
TMI SST



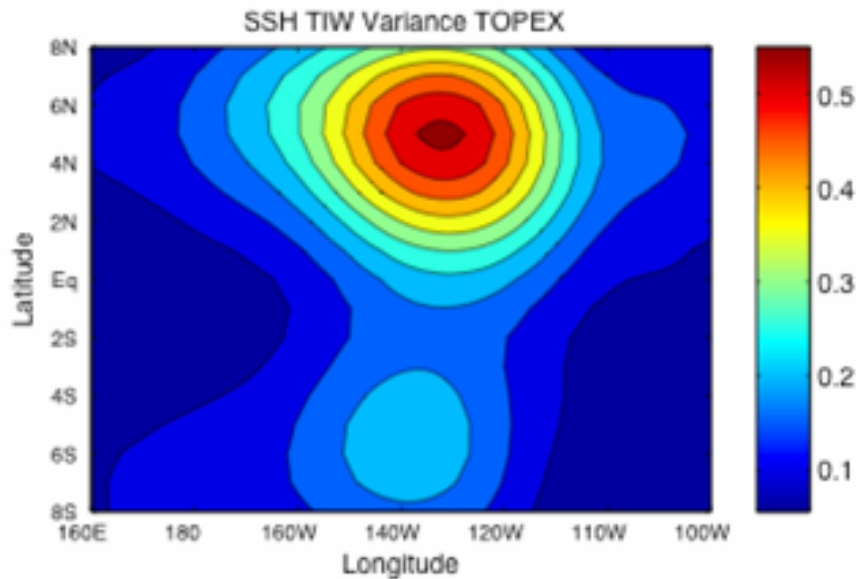
Reynolds SST



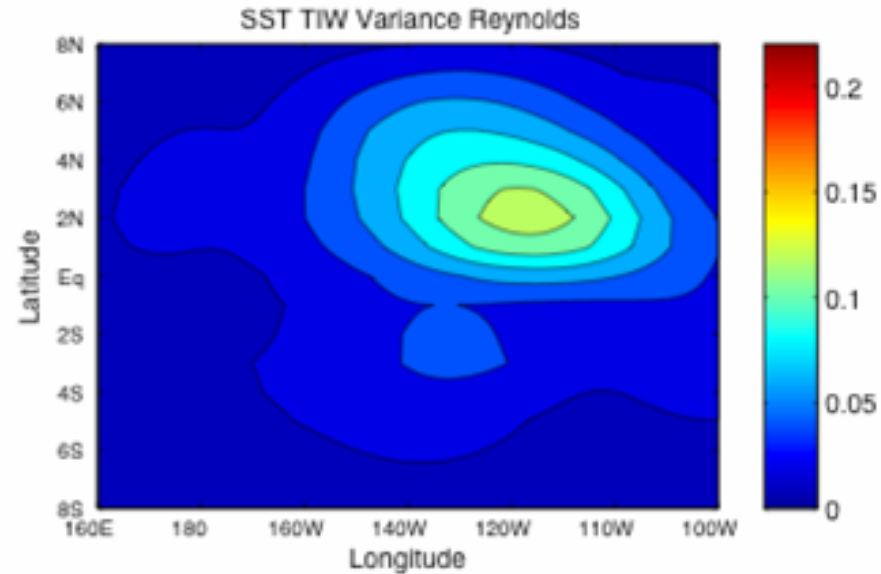
TMI SST



TOPEX

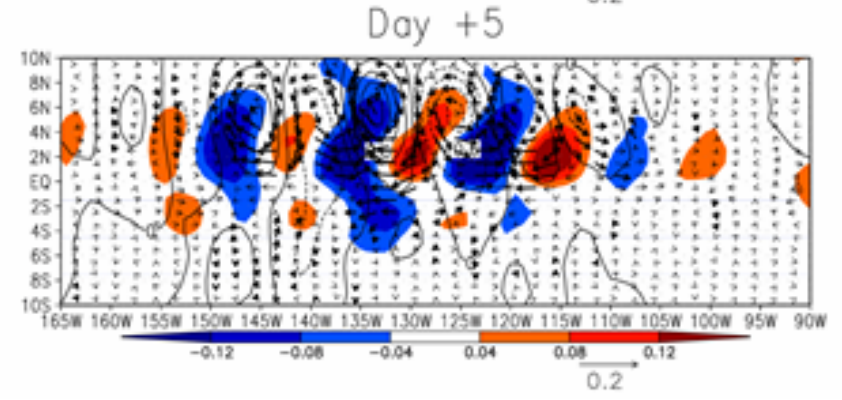
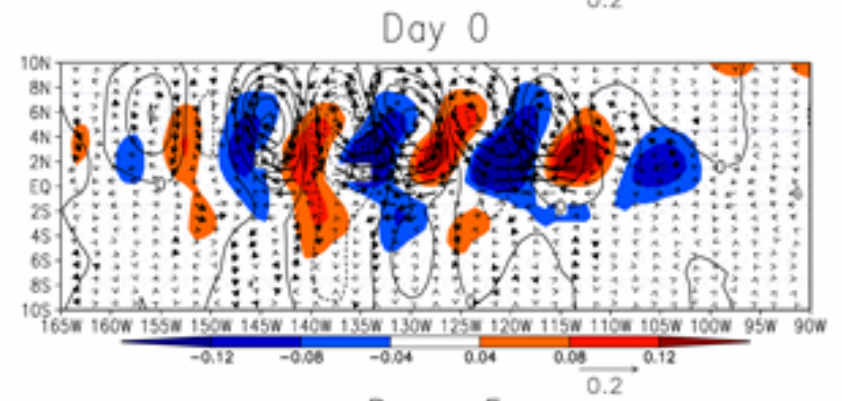
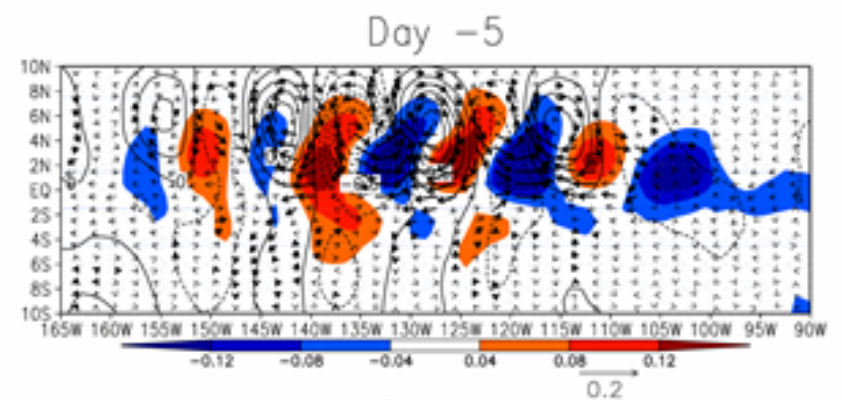
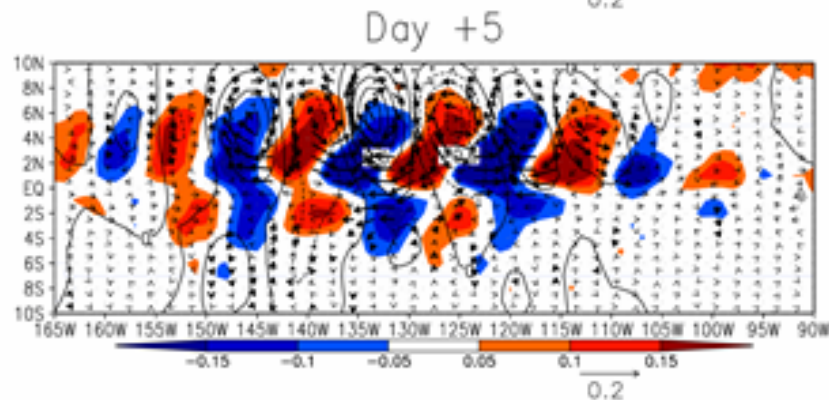
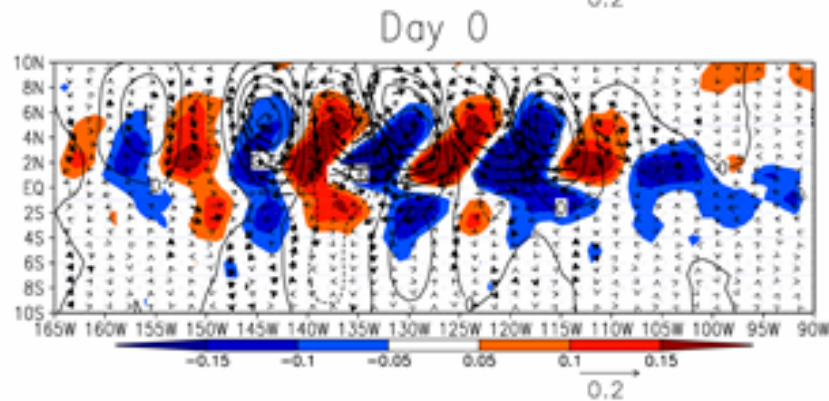
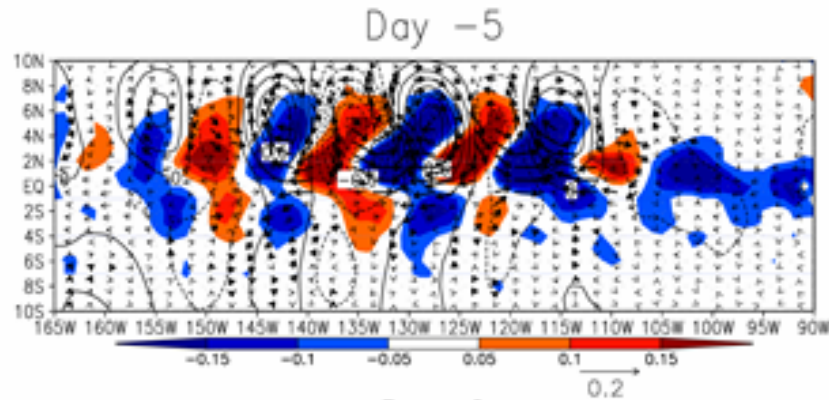


Reynolds SST



TMI SST

Reynolds SST



SST: Shading, SSH: Contours, Surface currents: Arrows

HYCOM experiment

Domain: Tropical Indo-Pacific basin (30N-40S)

Period: 1981-2005

Daily surface fluxes

Shortwave and longwave radiation:

ISCCP-FD (Zhang et al. 2005)

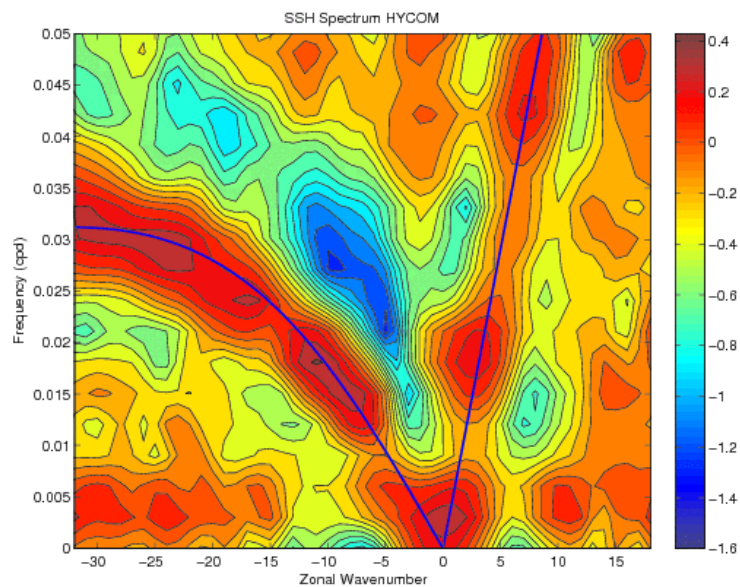
Latent and sensible heat fluxes

*Winds, air temperature and humidity from
the NCEP/NCAR reanalysis*

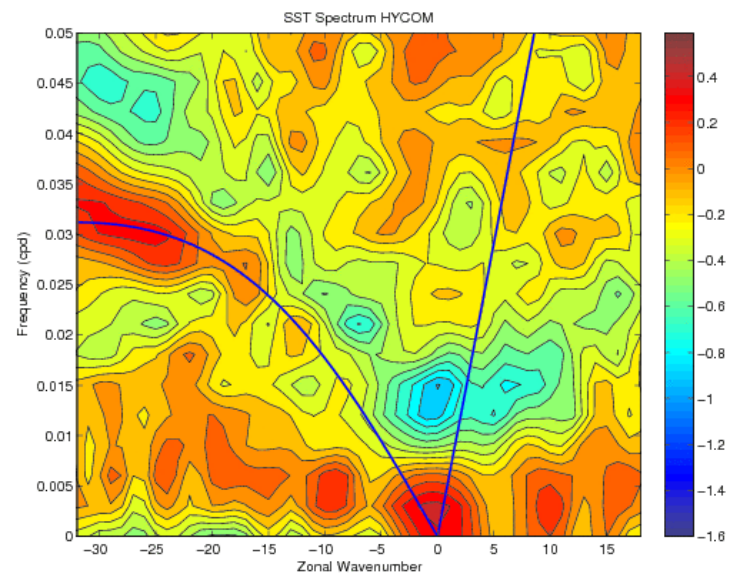
Resolution: Zonal ==> 1 deg.

Meridional ==> Stretched coordinate (0.25 deg. on the equator)

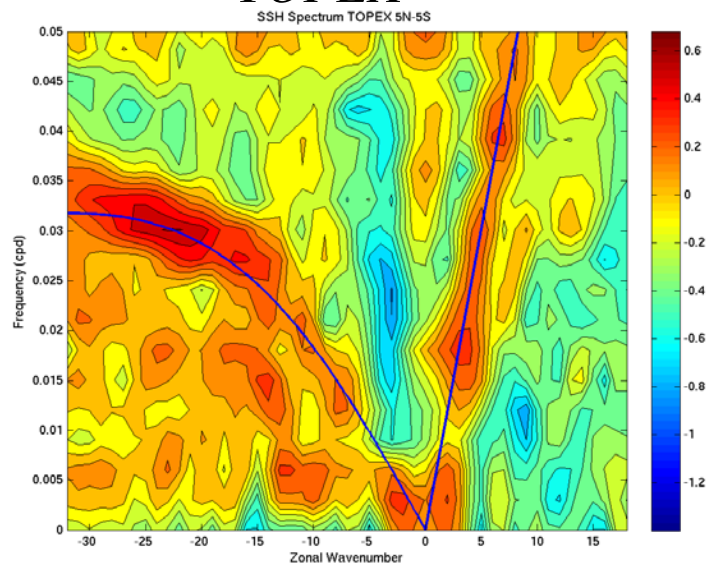
HYCOM SSH



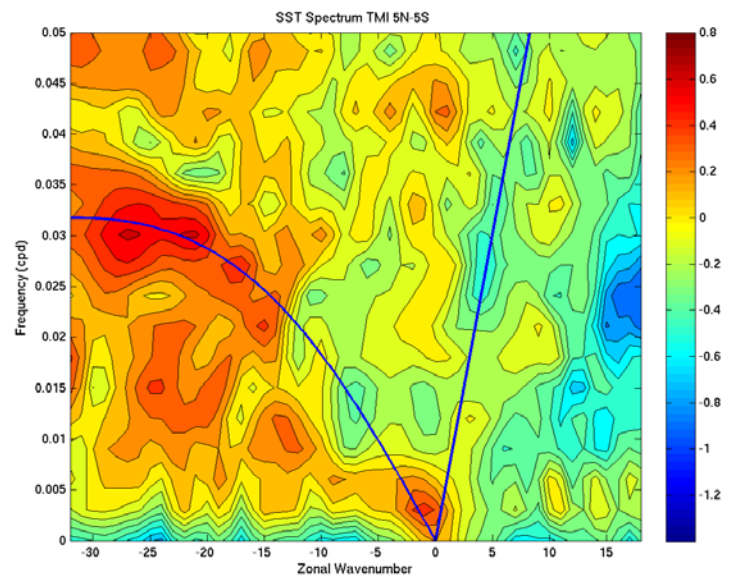
HYCOM SST



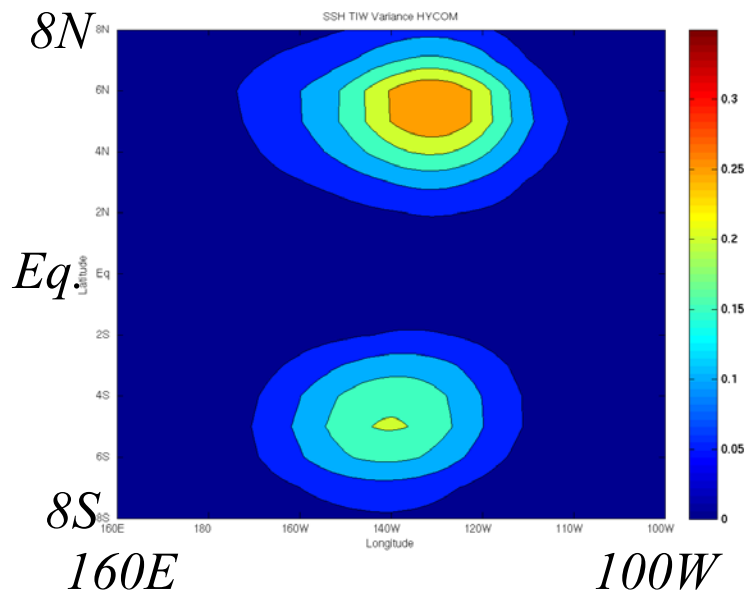
TOPEX



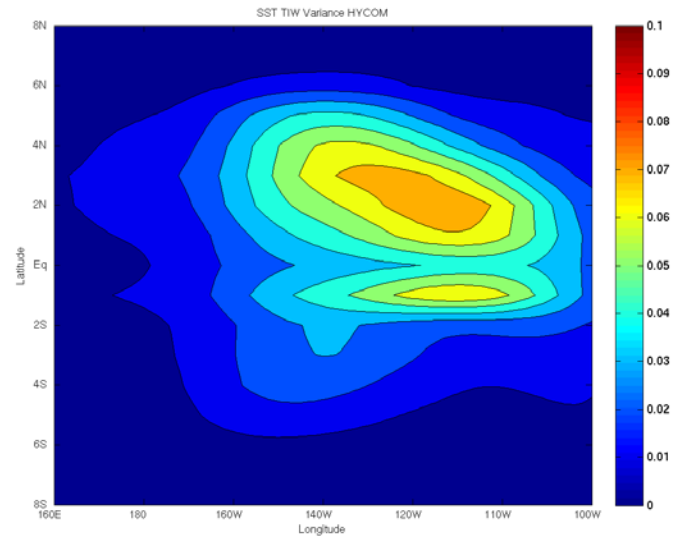
TMI SST



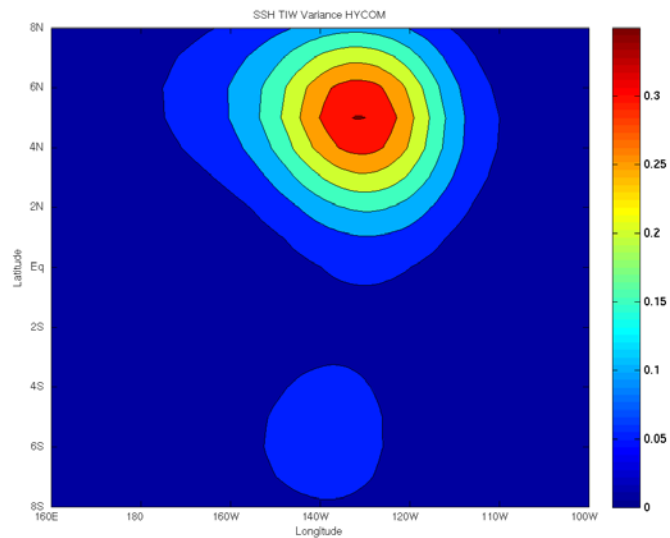
HYCOM SSH



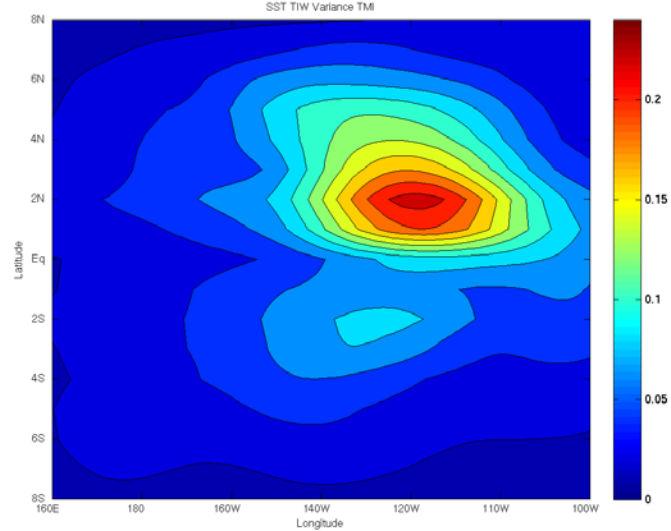
HYCOM SST



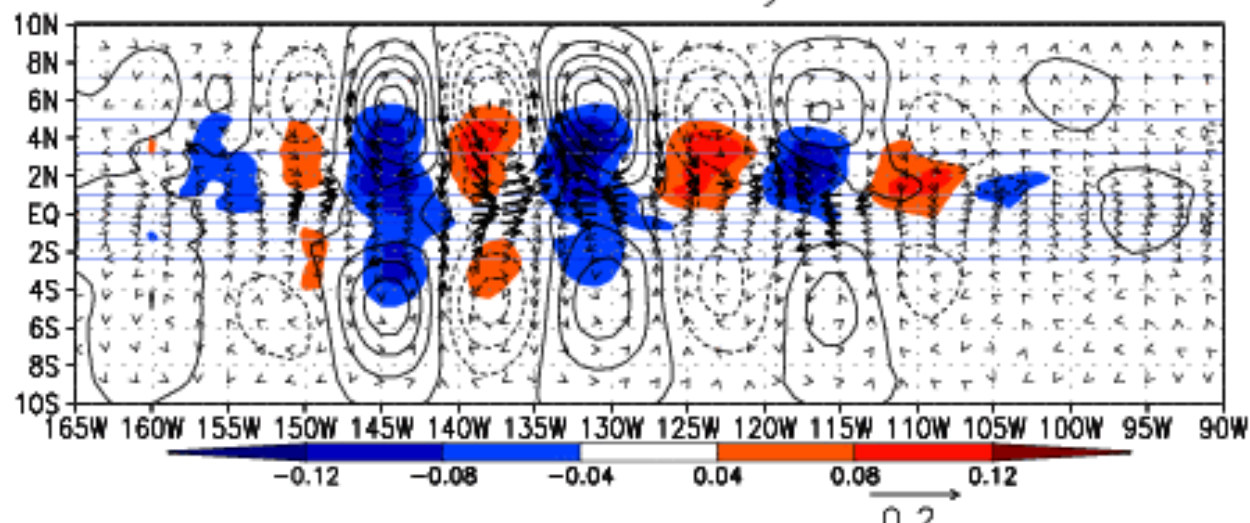
TOPEX



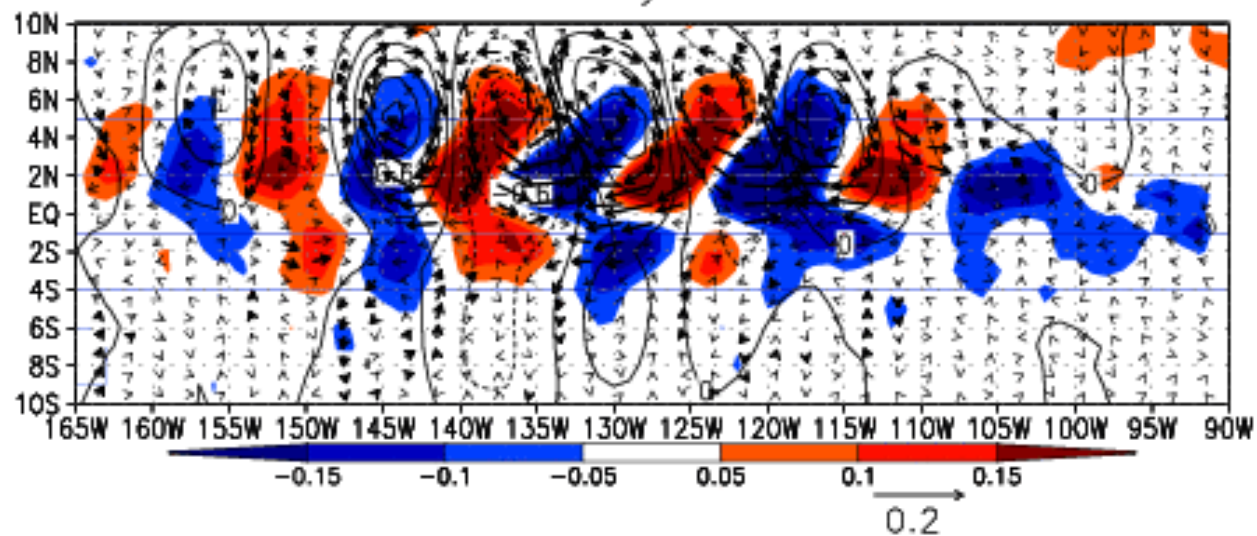
TMI SST



HYCOM Day 0



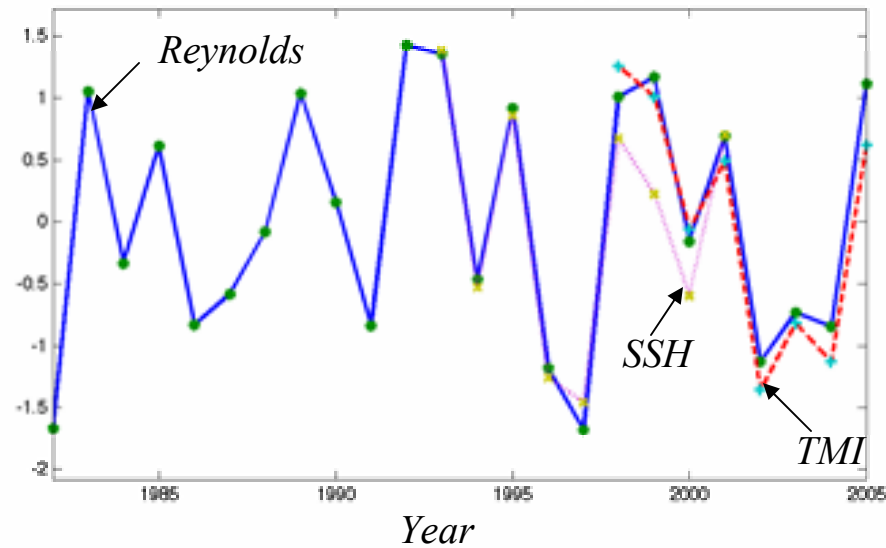
TMI SST Day 0



Interannual variation of TIW activity

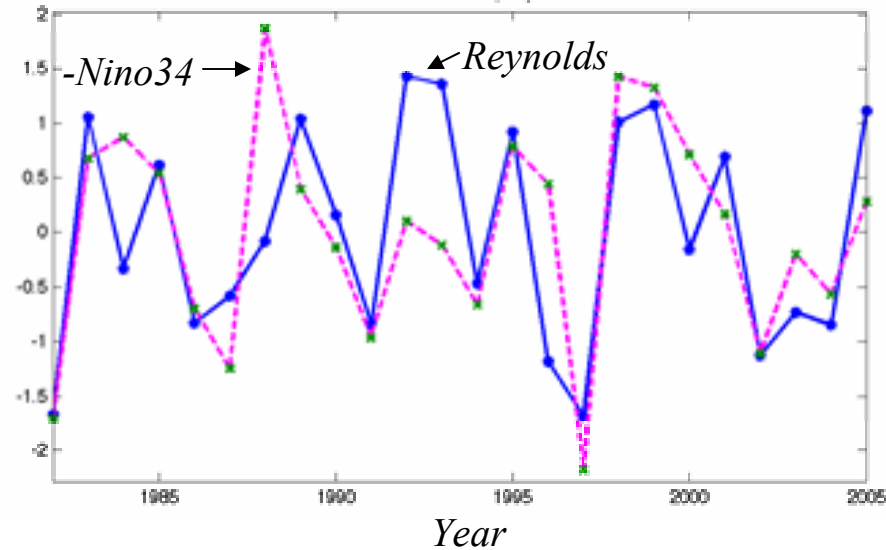
160W-100W, 5N-Eq., July-Jan

SST and SSH Standard Deviation 160W-100W 5N-Eq July-Jan Normalized

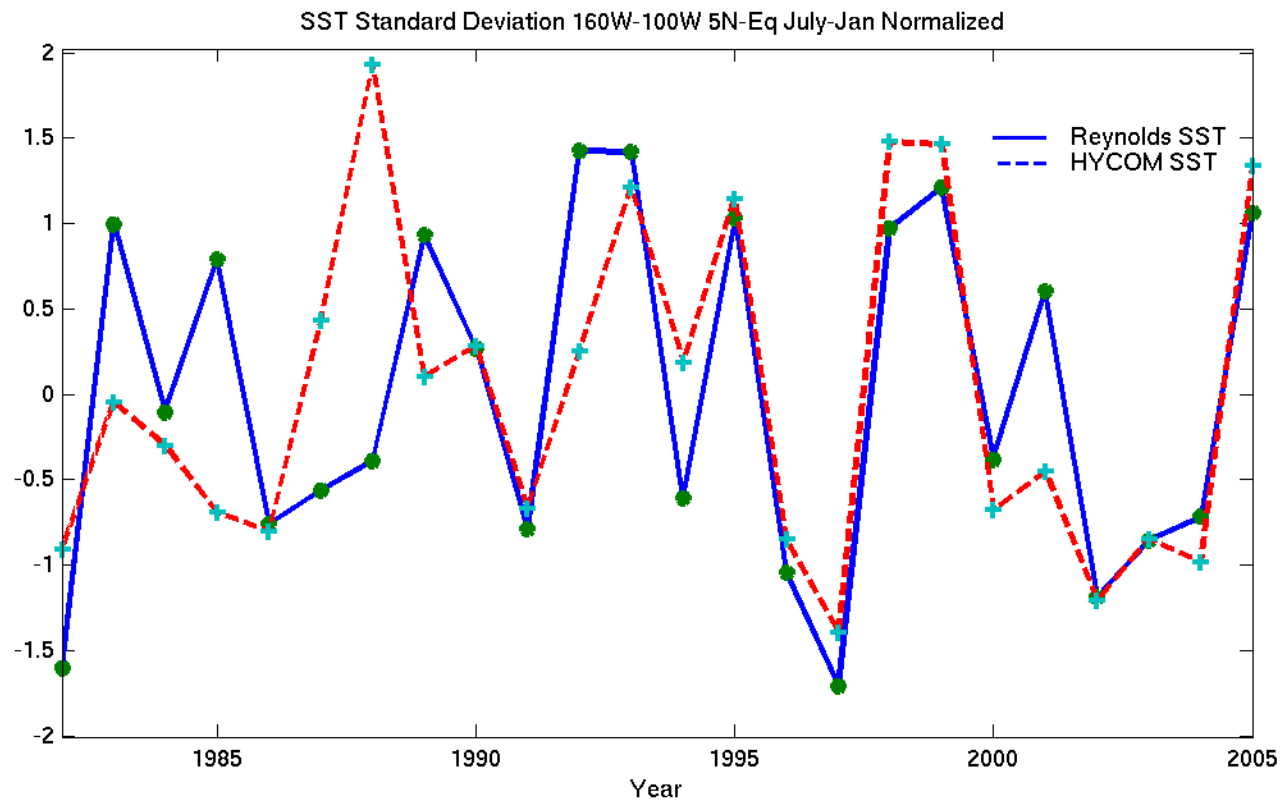


-Nino34 SST

-Nino34 SST 160W-100W 5N-Eq July-Jan Normalized



Corr. Coef. = 0.66



Conclusions

Statistical analyses for the description of TIW are useful for the evaluation of the model performance

HYCOM is able to generate TIWs which have similar space and time scales to those in observations.

However, there are significant differences between HYCOM and observations that include amplitude, spatial pattern and phase relationship.

On going study

Can high resolution model generate better TIWs?

=> Necessary horizontal resolution to generate realistic TIWs?